

BEFORE THE BOARD OF COMMISSIONERS
FOR COLUMBIA COUNTY, OREGON

In the Matter of Adopting the Columbia County
Ambulance Service Ordinance and Plan

ORDINANCE NO. 2024-1

The Board of County Commissioners for Columbia County, Oregon, ordains as follows:

SECTION 1. TITLE.

This Ordinance shall be known as Ordinance No. 2024-1.

SECTION 2. AUTHORITY.

This Ordinance is adopted pursuant to ORS 203.035, ORS 682.062, and ORS 682.017.

SECTION 3. POLICY AND PURPOSE.

The Board of County Commissioners finds:

1. That ORS 682.062 and OAR 333-260-0000 to 333-260-0070 require Columbia County to develop and adopt a plan for the County relating to the need for and coordination of ambulance services and to establish Ambulance Service Areas (ASAs) consistent with an adopted Ambulance Service Plan.

2. That this Ordinance adopts the Columbia County Ambulance Service Plan (Plan). The Plan establishes Ambulance Service Areas, expectations for ambulance provider operational system elements, establishing structure and processes for quality assurance, coordination of resources among ASA providers and other resources, mass casualty incident plan development and implementation, emergency communication and systems access expectations, methods for selecting ambulance service providers for each Ambulance Service Area, and establishes an Ambulance Service Area Advisory Committee, consistent with ORS 682.062, 682.017 and 682.031 and implementing regulations.

SECTION 4. HISTORY.

Ordinance No. 90-23 was adopted in 1990, establishing Ambulance Service Areas; assigning Ambulance Service Providers; Creating an Ambulance Service Advisory Committee; providing penalties; and prescribing effective dates. The Ordinance was amended in 2002 by Ordinance No. 2002-3, modifying Section 15 of the Ordinance, and was amended again in 2016 by Ordinance No. 2016-1 to (1) integrate the amendments

made by Ordinance No. 2002-3 into the Columbia County Ambulance Service Ordinance, to update statutory and administrative rule references in the Ordinance which had been renumbered, to correct typographical errors in the Ordinance, to delete ordinance provisions which were no longer relevant to the Ambulance Service Ordinance, to add ordinance provisions to enhance administrative efficiency, and too adopt a format which was similar to other County Ordinances. In addition to Ordinance No. 90-23, the County adopted its Ambulance Service Plan by Order No. 143-91, "In the Matter of the Adoption of the Columbia County Ambulance Service Plan of August 14, 1991" on August 21, 1991. On May 18, 2016, the County adopted amendments to the Ambulance Service Plan Area boundaries by Order No. 16-2016 to address two areas of Clatsop County served by Columbia County fire and ambulance providers.

In 2022, the County hired Fitch and Associates to conduct an operational analysis of ambulance services, identify gaps and potentially duplicative services, provide financial and service models for improvement, and finalize a new ambulance service plan that satisfies the Oregon Health Authority rules and requirements. Fitch and Associates conducted its analysis and presented a report to the County in September 2022 and a draft Plan in March 2023. The County consulted with its EMS leaders and emergency response partners to finalize the draft Plan and submitted it to the Oregon Health Authority for approval on May 25, 2023. The Oregon Health Authority reviewed the Plan and required further development by notice dated September 15, 2023. Thereafter, the County made the required changes and conducted additional outreach to and consultation with its Ambulance Service Committee, EMS leaders, and emergency response partners and resubmitted the updated plan on October 23, 2023. The Oregon Health Authority approved the modified Plan on by notice dated December 12, 2023. The Plan is now ready for adoption.

SECTION 5. ADOPTION or AMENDMENT.

The Columbia County Ambulance Service Plan which is attached hereto as Exhibit A, is hereby adopted.

SECTION 6. SEVERABILITY.

The provisions of this Ordinance are severable. If any provision of this Ordinance is determined to be invalid by a court of competent jurisdiction, such provision shall be considered a separate, distinct and independent provision, and the decision shall not affect the validity of the remaining portions thereof.

///
///
///
///
///
///
///

SECTION 7. SCRIVENER'S ERRORS.

A scrivener's error in any portion of this Ordinance or its attachments may be corrected by order of the Board of County Commissioners.

DATED this 21 day of February, 2024.

BOARD OF COUNTY COMMISSIONERS
FOR COLUMBIA COUNTY, OREGON

By: [Signature]
Casey Garrett, Chair

By: [Signature]
Kellie Jo Smith, Commissioner

By: [Signature]
Margaret Magruder, Commissioner

Approved as to form
By: [Signature]
Office of County Counsel

Attest: [Signature]
Recording Secretary

First Reading: FEB. 7th 2024
Second Reading: FEB. 21, 2024
Effective Date: 05/21/2024

EXHIBIT A



AMBULANCE SERVICE AREA PLAN

COLUMBIA COUNTY, OREGON

ADOPTED FEBRUARY 21, 2024

EFFECTIVE MAY 21, 2024

I. COLUMBIA COUNTY AMBULANCE SERVICE AREA PLAN CERTIFICATION..... 3

II. OVERVIEW OF COLUMBIA COUNTY 4

III. DEFINITIONS..... 5

IV. BOUNDARIES..... 10

1. AMBULANCE SERVICE AREA DESCRIPTION..... 10

2. MAPS..... 10

3. ALTERNATIVES TO REDUCE RESPONSE TIMES 10

V. SYSTEM ELEMENTS..... 11

1. 911 DISPATCHED CALLS 11

2. NON-EMERGENCY AND INTERFACILITY TRANSFERS 11

3. NOTIFICATIONS AND RESPONSE TIMES..... 12

4. LEVEL OF CARE..... 13

5. PERSONNEL 14

6. MEDICAL SUPERVISION 15

7. PATIENT CARE EQUIPMENT..... 15

8. VEHICLES 16

9. TRAINING 16

VI. QUALITY ASSURANCE 16

1. STRUCTURE..... 17

2. PROCESS 17

3. COLUMBIA COUNTY ADMINISTRATOR NOTIFICATION..... 18

4. PROBLEM RESOLUTION..... 18

5. SANCTIONS FOR NO COMPLIANT PERSONNEL OR PROVIDERS..... 19

6. PENALTIES 19

VII. COORDINATION 20

1. AUTHORITY..... 20

2. COMPLAINT REVIEW PROCESS..... 20

3. MUTUAL AID AGREEMENTS..... 20

4. DISASTER RESPONSE..... 21

4.1 COUNTY RESOURCES OTHER THAN AMBULANCES..... 21

4.2 OUT OF COUNTY RESOURCES..... 21

4.3 MASS CASUALTY INCIDENT (MCI) PLAN 22

4.4 PERSONNEL AND EQUIPMENT RESOURCES..... 22

4.5 NON-TRANSPORTING EMS PROVIDER..... 22

4.6 HAZARDOUS MATERIALS (HAZ-MAT)..... 23

4.7 SEARCH AND RESCUE..... 23

4.8 EXTRICATION 23

4.9 SPECIALIZED RESCUE..... 24

4.10 EMERGENCY COMMUNICATION AND SYSTEM ACCESS 24

4.10.1 TELEPHONE 24

4.10.2 DISPATCH PROCEDURES 24

4.10.3 RADIO SYSTEM 25

4.10.4 COMPUTER-AIDED DISPATCH (CAD) INTEGRATION 26

4.10.5 EMERGENCY MEDICAL SERVICES DISPATCHER TRAINING 27

4.10.6 MASS GATHERINGS 26

VIII. PROVIDER SELECTION..... 27

1. INITIAL ASSIGNMENT 27

A. FIRST RESPONSE..... 27

2. REASSIGNMENT 27

3. APPLICATION FOR AN ASA 27

4. NOTIFICATION OF VACATING AN ASA 28

5. MAINTENANCE OF LEVEL OF SERVICES 28

5.1 FAILURE TO NOTIFY..... 29

5.2 REVOCATION OF AN ASA 28

6. RENEWAL PROCESS FOR AN ASA 28

IX. COUNTY ORDINANCES AND RULES..... 29

X. APPENDIX 29

I. COLUMBIA COUNTY AMBULANCE SERVICE AREA PLAN CERTIFICATION

The undersigned certify pursuant to Oregon Administrative Rule 333-260-0030(2)(a)(b) and (c) that:

1. Each subject or item contained in the Columbia County Ambulance Service Plan has been addressed and considered in the Board of County Commissioners' adoption of the Plan.
2. In the Board of County Commissioners, the ambulance service areas established in the Plan, provide for the efficient and effective provision of ambulance services.
3. To the extent they are applicable, the County has complied with ORS 682.062 to 682.991 and existing local ordinances and rules.

DATED this _____ day of _____, 2024.

**BOARD OF COUNTY COMMISSIONERS
FOR COLUMBIA COUNTY, OREGON**

By: _____
Casey Garrett, Chair

By: _____
Kellie Jo Smith, Commissioner

By: _____
Margaret Magruder, Commissioner

ATTEST:

Recording Secretary

II. OVERVIEW OF COLUMBIA COUNTY

Columbia County is in the northwest portion of the state, bordered by Washington State and the Columbia River on the North and East, Washington and Multnomah Counties to the South, and Clatsop County to the West.

The County has a total land mass of 657 sq. miles (420,301 acres), with an additional 32 sq. miles of water comprised primarily from the Columbia River. Columbia County has over 62 miles of Columbia River shoreline, the most in the state. The County consists primarily of heavily forested valleys and coastal mountain ranges with elevations ranging from sea level to 2,240 ft. in the Coastal Range Mountains.

According to the 2020 U.S. Census Bureau's most current available data, Columbia County is home to approximately 52,589 residents (as shown below), a 9.3% increase from 2010 Census data.

| <i>Jurisdiction</i> | <i>Population</i> | <i>Percent of County</i> |
|--------------------------------------|-------------------|--------------------------|
| City of St Helens | 13,817 | 26.3 |
| City of Scappoose | 8,010 | 15.2 |
| City of Vernonia | 2,374 | 4.5 |
| City of Columbia City | 1,949 | 3.7 |
| City of Rainier | 1,911 | 3.6 |
| City of Clatskanie | 1,716 | 3.3 |
| City of Prescott | 82 | 0.2 |
| Unincorporate Areas (by subtraction) | 22,730 | 43.2 |
| Total Columbia County | 52,589 | 100 |

Source: 2020 United States Census Bureau

Scappoose, St. Helens, Columbia City, Rainier, and Clatskanie are located along US Highway 30, which runs through the County's eastern and northern portions along the Columbia River. Most

residents dwell in or around the incorporated cities located within the County. Agriculture, forest products, manufacturing, and tourism, provide the basis of the County's economy.

III. DEFINITIONS

1. "Advanced Emergency Medical Technician (AEMT or Advanced EMT)" means a person licensed by the Authority as an Advanced Emergency Medical Technician. OAR 333-265-000(1).
2. "Ambulance" means a privately or publicly owned motor vehicle, aircraft or watercraft that is regularly provided or offered to be provided for the emergency transportation of persons who are ill or injured or who have disabilities. ORS 682.025(1).
3. "Ambulance Service" means a person, governmental unit or other entity that operates ambulances and that holds itself out as providing prehospital care or medical transportation to persons who are ill or injured or who have disabilities.
4. "Ambulance Service Area (ASA)" means a geographic area served by one ambulance service provider and may include all or a portion of a county or all or portions of two or more contiguous counties.
5. "Ambulance Service Plan" means a written document, which outlines a process for establishing a county emergency medical services system. A plan addresses the need for and coordination of ambulance services by establishing ambulance service areas for the entire county and by meeting the other requirements of these rules. Approval of a plan will not depend upon whether it maintains an existing system of providers or changes the system. For example, a plan may substitute franchising for an open-market system.
6. "ASA Advisory Committee (Committee)" means a committee formed to review standards, make recommendations to, or set new standards for the Board of County Commissioners for all matters regarding Emergency Medical Services (EMS) and review and make recommendations regarding the soundness of the ASA.
7. "ASA Administrator" is the person designated by the Board of Commissioners to administer the ASA Ordinance and Plan.
8. "Columbia 911" is the communications dispatch center within Columbia County utilized for all emergent and non-emergent requests made by the public, emergency services

personnel, and government officials. This is a stand-alone facility and is not owned or operated by Columbia County.

9. "Columbia County Board of Commissioners (Board)" means the elected governing body with jurisdiction over the Columbia County ASA Plan.
10. "Communication System" means a system of two-way radio communications between ambulances, dispatchers, hospitals, and other agencies as needed. A two-channel multi-frequency capacity is minimally required.
11. "Computer-Aided Dispatch (CAD)" means systems utilized by dispatchers, call-takers, and 9-1-1 operators to prioritize and record incident calls, identify the status and location of responders in the field, and effectively dispatch responder personnel.
12. "Disaster" means an occurrence of a natural catastrophe, technological accident, or human-caused event that has resulted in severe property damage, deaths, and/or multiple injuries.
13. "Division" means the Public Health Division, Oregon Health Authority. OAR 333-260-0010(7).
14. "Effective Provision of Ambulance Services" means ambulance services that comply with the County Ambulance Service Plan provisions or boundaries, coordination, and system elements.
15. "Emergency" means those medical or trauma conditions that manifest themselves by symptoms of sufficient severity that a prudent layperson possessing an average knowledge of health and medicine would reasonably expect that failure to receive immediate medical care would place the health of a person or the fetus in the case of a pregnant woman, in serious jeopardy. An emergency condition also includes any condition specifically dealt with in the emergency medical dispatch system adopted by Columbia 911.
16. "Emergency care" means the performance of acts or procedures under emergency conditions in the observation, care, and counsel of persons who are ill or injured or who have disabilities; in the administration of care or medications as prescribed by a licensed physician, insofar as any of these acts is based upon knowledge and application of the principles of biological, physical and social science as required by a completed course utilizing an approved curriculum in pre-hospital emergency care. However, "emergency

care” does not include acts of medical diagnosis or prescription of therapeutic or corrective measures. ORS 682.025(3).

17. “Emergency Medical Dispatch (EMD)” means a series of components that allow an emergency communications dispatcher to triage calls, send appropriate resources with the appropriate response, and provide pre-arrival/post-dispatch instructions as needed.
18. “Emergency Medical Responder (EMR)” means a person licensed by the Authority as an Emergency Medical Responder. OAR 333-265-000(17).
19. “Emergency Medical Services (EMS) Agency” means any person, governmental agency or unit, or other entity that utilizes emergency medical services providers to provide prehospital emergency or non-emergency care. An emergency medical services agency may be either an ambulance service or a non-transporting service. OAR 333-265-0000(17).
20. “Emergency Medical Services Provider (EMS Provider)” means a person who has received formal training in pre-hospital and emergency care and is licensed to attend to any person who is ill, injured, or who has a disability. Police officers, fire fighters, funeral home employees, and other personnel serving in a dual capacity, one of which meets the definition of “emergency medical services provider,” are “emergency medical service providers” within the meaning of ORS Chapter 682. OAR 333-265-0000(18).
21. “Emergency Medical Technician (EMT)” means a person licensed by the Authority as an Emergency Medical Technician. OAR 333-265-0000(19).
22. “Emergency Medical Technician-Intermediate (EMT-Intermediate)” means a person licensed by the Authority as an EMT-Intermediate. OAR 333-265-0000(20).
23. “Franchise” means the authorization granted by the Board to provide exclusive emergency ambulance services in a specific geographic region within Columbia County.
24. “Frontier Area” means the areas of the state with a population density of six or fewer persons per square mile and are accessible by paved roads.
25. “Inter-Facility Ambulance” means an ambulance that is licensed by the State of Oregon and provides transportation services between hospitals or transfers to and from a hospital to a residential care facility, assisted living facility, adult foster care home, convalescent care facility, non-urgent medical clinic, rehabilitation center, or private residence.

26. "Health Officer" means the Columbia County Public Health Officer.
27. "License" means those documents issued by the Authority to the owner of an ambulance service and ambulance when the service and ambulance are found to comply with ORS 820.350 to 820.380 and rules adopted thereunder and OAR 333-250-0200 through 333-250-0410 and 333-255-0000 through 333-255-0082.
28. "Mass Casualty Incident (MCI)" means an incident in which emergency medical services resources, such as personnel and equipment, are overwhelmed by the number and severity of casualties.
29. "Non-Emergency" means those medical or trauma conditions not specifically dealt with in the emergency medical dispatch system adopted by the County. Unless specified by rule, those conditions that fall within the emergency medical dispatch system shall immediately be transferred to the emergency ambulance providers designated by Columbia County through the 911 system.
30. "Non-Emergency Ambulance" means any privately or publicly owned motor vehicle, aircraft, or marine craft operated by a Division-licensed ambulance service and that is regularly provided or offered to be provided for the emergency and non-emergency transportation of persons suffering from illness, injury or disability. OAR 333-260-0010(1).
31. "Non-Emergency care" means the performance of acts or procedures on a patient who is not expected to die, become permanently disabled or suffer permanent harm within the next 24-hours, including but not limited to observation, care and counsel of a patient and the administration of medications prescribed by a physician licensed under ORS chapter 677, insofar as any of those acts are based upon knowledge and application of the principles of biological, physical and social science and are performed in accordance with scope of practice rules adopted by the Oregon Medical Board in the course of providing prehospital care as defined by this rule. See ORS 682.025(8).
32. "Notification Time" means the length of time between the initial receipt of the request for emergency medical service by either a provider or a PSAP and the notification of all responding emergency medical service personnel.
33. "Owner" means the person having all the incidents of ownership in an ambulance service or an ambulance vehicle or where the incidents of ownership are in different persons, the

person, other than a security interest holder or leaser, entitled to the possession of an ambulance vehicle or operation of an ambulance service under a security agreement or a lease for a term of 10 or more successive days.

34. "Paramedic" means a person who is licensed by the Authority as a Paramedic. OAR 333-265-0000(26).
35. "Patient" means a person who is ill or injured or who has a disability and who receives emergency or nonemergency care from an EMS provider. OAR 333-265-0000(27).
36. "Priority Dispatch" is a system used by the PSAP to prioritize calls from least severe to most severe.
37. "Provider Selection Process" means the process established by the County for selecting an Ambulance Service Provider or Providers.
38. "Public Service Answering Point (PSAP)" means a 24-hour communications facility established as an answering location for 9-1-1 calls originating within a given service area.
39. "Quick Response Team (QRT)" means an agency that provides initial response and basic life support care without transportation capabilities by licensed emergency medical service providers.
40. "Rural Area" means a geographic area 10 or more miles from a population center of 50,000 or more, with a population density greater than six persons per square mile.
41. "Search and Rescue Area" means the areas of the state that are primarily forest, recreational or wilderness lands that are not accessible by paved roads or not inhabited by six or more persons on a year-round basis. — No established prehospital response time. OAR 333-200-0080(E).
42. "Suburban Area" means an area that is not urban, and which is contiguous to an urban community, including the area within a 10-mile radius of that community's center and the areas beyond the 10-mile radius which are contiguous to the urban community and have a population density of 1,000 or more per square mile.
43. "Urban Area" means an incorporated community of 50,000 or more population.

IV. BOUNDARIES

1. AMBULANCE SERVICE AREA DESCRIPTION

The entire County shall be included in an ambulance service plan known as the Columbia County Ambulance Service Area Plan. The ASA's have been adopted in accordance with Section 7 of the Columbia County Ambulance Service Ordinance by the Board of Commissioners. Boundaries of the ASA can be modified as dispatched equipment, roads, populations, providers, etc., change. The County is divided into seven Ambulance Service Areas (ASAs):

- Ambulance Service Area – 1 Sauvie Island Area
- Ambulance Service Area – 2 Scappoose Area
- Ambulance Service Area – 3 St. Helens Area
- Ambulance Service Area – 4 Rainier Area
- Ambulance Service Area – 5 Clatskanie Area
- Ambulance Service Area – 6 Mist-Birkenfeld
- Ambulance Service Area – 7 Vernonia Area

The ASAs are designed to promote cooperation and coordination with 911 area fire districts and incorporated city boundaries to minimize the effects of artificial and geographical barriers on response times and patient outcomes.

The ambulance service providers that serve Columbia County, a description of their boundaries, and other general information are attached in this ASA Plan in the appendices. In addition, a current set of maps that depict current boundaries for the ambulance service areas, fire districts, and the Public Safety Answering Point (PSAP) location are on file with Columbia County Public Health and are attached to this plan in the appendices.

2. MAPS

The maps attached in the appendices represent the boundaries of each ambulance service area within Columbia County and the "System Response Times," which include notification, turnout time, and response times. Actual response time is subject to access, weather, road and traffic conditions, and other circumstances that can affect response times.

3. ALTERNATIVES TO REDUCE RESPONSE TIMES

Heavily forested, mountainous terrain and severe weather conditions can present difficult access and possible long response times to emergency transporting ambulances. When an urgent response is indicated, Columbia 911 Communications Center will work with the nearest appropriate agency/resources and, at their request, place on standby or activate rotary-wing air ambulance services. During inclement weather, four-wheel all-terrain vehicles will be used

where possible, with snowmobiles and helicopters as alternatives to access unplowed roads and wilderness areas.

In addition, a tiered response system is utilized to provide the best available patient care while maximizing available resources. The tiered response system also includes activating adjoining county medical and air ambulance services for remote areas or critical care scenes, allowing a direct route to a medical facility.

Transport-to-Meet has been highlighted by the State of Oregon's Health Authority. ORS 682.035 provides that ORS Chapter 682 and ORS 820.330 to 820.380 do not apply to vehicles being used to render temporary assistance in the case of major catastrophe or emergency with which the ambulance services of the surrounding locality are unable to cope, or when directed to be used to render temporary assistance by an official at the scene of an accident.

V. SYSTEM ELEMENTS

1. 911 DISPATCHED CALLS

The County designates dispatch centers for Ambulance Providers and the 911 calls for medical assistance are answered by Columbia 911 Communications Center (PSAP). The dispatch center providing ambulance dispatch shall have a Medical Director and use emergency medical dispatch protocols approved by the EMS Medical Director. This Plan establishes the goal of a single dispatch center designated by the County to provide dispatch and data collection for EMS. As such, the PSAP's Computer-Aided Dispatch system (CAD) will be the official timekeeper for all compliance issues associated with the ASA Plan and response time criteria. In some cases, ambulance services may receive direct calls for service. In such cases, the service receiving such a call shall notify Columbia 911 when able for radio dispatch. The contact address and phone number for Columbia 911 is listed below:

Columbia 911 Communications District
58611 McNulty Way, St Helens, OR 97051
Emergency Calls: 911
Non-Emergency Calls: (503) 397-1521

2. NON-EMERGENCY AND INTERFACILITY TRANSFERS

The Board shall designate one or more non-emergency ambulance providers in each ASA in accordance with Oregon Administrative Rules (OAR 333-260-0070(3)). These designated emergency ambulance providers are also authorized to provide non-emergency ambulance service within their assigned ASA. Columbia County does not have a hospital or critical access

care center located within its borders. As such, a non-emergency interfacility transfer can include requests from long-term care centers, clinics, urgent care, dialysis centers, and hospice facilities.

The Board recognizes that other non-emergency ambulance providers exist outside of the County and may provide non-emergency ambulance service within the County. However, the designated ASA provider shall have the first right of refusal for all non-emergency and inter-facility transfers that originate within their assigned ASA, except in the case of extremely specialized services (neo-natal transport) or excessively life-threatening circumstances that require air transportation. Should the ASA provider be unable to provide service, it is the provider’s responsibility to ensure that alternate service is available.

3. NOTIFICATIONS AND RESPONSE TIMES

Standards established by the State of Oregon, known as the Trauma System Response Times Standards OAR 333-200-0080, maintain a minimum standard for the Columbia County ASA System. In reviewing proposed changes to the response times, the County may consider the following general guidelines.

| Service Area | Definition | Response Time |
|--------------|---|---------------|
| Urban | An incorporated community of 50,000 or more population | 8 Minutes |
| Suburban | An area which is not urban, and which is contiguous to an urban community; includes the area within a 10-mile radius of that community’s center. It also includes areas beyond the 10- mile radius which are contiguous to the urban community and have a population density of 1,000 or more per square mile | 15 Minutes |
| Rural | A geographic area 10 or more miles from a population center of 50,000 or more, with a population density of greater than six persons per square mile | 45 Minutes |

When an emergency call is received by Columbia 911 Communications Center, the appropriate ambulance service provider, based on closest available unit, will be immediately dispatched to

handle the call. Columbia 911 will factor in distance between the emergency medical incident and the nearest ambulance in miles. Appropriate units from outside of the emergency incident ASA will be factored into response. The closest appropriate unit will be dispatched, even if it comes from a neighboring ASA. All ambulances providing service in Columbia County's franchises must be equipped with GPS AVL transponders compatible with Columbia 911 dispatch software's. This will achieve the County's goal of expedited emergency care for its residents, regardless of agency affiliation or unit location. Current Columbia County franchise providers will have until July of 2025 to become compliant with this requirement. Any ambulance service originating outside of Columbia County, or utilizing a different PSAP than Columbia 911, must be compliant with Section VII, 4.10.4, Computer-Aided Dispatch (CAD) Integration upon establishment of any new franchise agreement.

Provider Response Time compliance shall be as follows:

| Service Area | Response Time | Compliance Percentage |
|---------------------|----------------------|------------------------------|
| City of St. Helens | 15 Minutes | 90% |
| City of Scappoose | 15 Minutes | 90% |
| City of Rainier | 15 Minutes | 90% |
| City of Clatskanie | 15 Minutes | 90% |
| City of Vernonia | 15 Minutes | 90% |
| Rural Areas | 45 Minutes | 90% |
| Frontier Areas | 120 Minutes | 90% |

In the future, as improvements are made to Emergency Medical Dispatch (EMD) triage, increasing demand and intensity on emergency service systems, or overall improvement in clinical care outcomes may allow for longer response times. The ASA Advisory Committee will continuously review response time regulations from the OHA, in conjunction with recommendations made by local EMS physician advisors, best practices around Columbia County, and other interested medical partners as improvements are made in triage and first response.

4. LEVEL OF CARE

Protocols, Policies, and Procedures: Providers in each trauma system area shall function under one set of off-line prehospital trauma protocols and one set of online medical control trauma policies and procedures which address basic, intermediate, and advanced levels of care.

Off-line treatment protocols shall clearly describe all treatment and transportation procedures and identify those that require online medical authorization. In addition, medical control policies and procedures must assure consistent area-wide coordination, data collection, and area-wide quality improvement responsibility.

All ambulances and ambulance services in Columbia County must maintain a current license with the Oregon Health Authority, Public Health Division. Equipment and supplies for vehicles must meet or exceed standards as outlined in OAR and this Plan.

An ambulance area service provider who utilizes a subcontractor or automatic aid agreement within its ASA to provide any part of its response commitments will maintain a written agreement to outline performance criteria standards for the subcontractor. The provider will notify the ASA Administrator in writing of any subcontracting arrangements.

The delivery of an Advanced Life Support assessment and treatment is the preferred level of care for Columbia County. Therefore, an ASA provider without continuous coverage at the Advanced Life Support (ALS) level shall maintain mutual aid agreements with other agencies capable of ALS service delivery. Basic Life Support (BLS) first response is allowed by Columbia County ASA providers or mutual aid when acuity levels and resource needs prevent immediate Advance Life Support (ALS) response.

5. PERSONNEL

When operating an ambulance in Columbia County, all personnel must meet the requirements of ORS 682.017 to 682.991 and OAR 333-250-0200 to 333-250-0410. A copy of each provider's ASA Application Form shall be attached as an exhibit to this Plan during the contract period of that ASA, showing personnel numbers and training level.

A BLS ambulance will consist of a minimum of two (2) licensed EMT Basic personnel. Columbia County will recognize two definitions of advanced medical support for the purposes of ambulance transport. An ALS ambulance in ASA 1-5 and ASA 7 will consist of one (1) EMT Basic, and one (1) Paramedic as specified in Columbia County Ordinance No. 2016-1. Due to ASA 6 being in the Frontier area, an ALS ambulance in ASA 6 will consist of a minimum one (1) EMT Basic and one (1) Advanced EMT, as specified in OAR 333-225-0070, should staffing, and availability of resources necessitate. Any provider operating in ASA 6 must declare this in writing to the Administrator in advance of their intent regarding ALS ambulance staffing.

When an ASA is awarded to a provider, the ASA Application Form, when submitted and attached as an exhibit, shall show the number of personnel in-house at the Station (if applicable), call-ins, or volunteers available on a regular basis (if applicable). Volunteer retention is a critical component of first response and transport sustainability. Therefore,

mandating the scheduling of volunteers will not be required, provided applicants can demonstrate compliance with current state response standards and patient outcomes, as adopted by Columbia County. The accepted ASA Application Form shall show the schedule of full-time paid, paid-per-call, or volunteer personnel.

6. MEDICAL SUPERVISION

Each EMS agency utilizing licensed medical personnel shall be supervised by a Medical Doctor licensed under ORS Chapter 677, currently registered and in good standing with the Oregon Medical Board as a Medical Doctor (MD) or Doctor of Osteopathic Medicine (DO). The physician must also be approved by the Oregon Health Authority EMS and Trauma Systems program as a Medical Director (Supervising Physician, Physician Advisor, and Medical Director are interchangeable terms).

7. PATIENT CARE EQUIPMENT

Patient care equipment must meet or exceed the Oregon Health Authority (OHA), Emergency Medical Services and Trauma System Section (OHA-EMS) requirements as specified in ORS 682.017 to ORS 682.991 and OAR 333-255-0070 thru 333-255-0073. The ambulance service provider shall maintain a list of equipment for their ambulances proving compliance with OAR 333-255-0072, which shall be furnished upon the request of the Oregon Health Authority.

The ASA provider shall have a policy/procedure requiring all equipment and supplies to be secured when the vehicle is in motion in cabinets or appropriate securing devices to reduce the risk of projectiles in the event of a vehicle crash. Loose supplies of any kind on the action wall or crew bench are not permitted. Equipment may not be strapped to the stretcher for storage. Best efforts should be made to use manufacturer-approved devices to reduce the risk of projectiles in accordance with device specifications.

The ASA provider shall have a preventive maintenance program for durable medical equipment (DME). At a minimum, this program shall include the following:

- Scheduled testing, calibration, and preventive maintenance based on manufacturer recommendations (if there are no manufacturer recommendations, the schedule is determined by the agency to be effective in preventing equipment failures);
- Planned replacement schedule;
- Equipment to be included in the DME maintenance program will consist of all electrical and mechanical (stretchers, stair chairs, monitors, IV/med pumps, ventilators, etc.).

8. VEHICLES

All ground ambulances must be either Type I, II, or III and be licensed by the Oregon Health Authority and other Federal-state agencies. In addition, all ambulances must meet or exceed the requirements outlined in ORS 682.017 to 682.991 and OAR 333-255-0060. All air ambulances must be licensed with the Oregon Health Authority and meet or exceed all Federal-state aviation requirements. Vehicles used in a “transport to meet” are not considered an ambulance and are not bound by the abovementioned statutes and rules. It would not be permissible, in most circumstances, for a first responder (that is not a licensed ambulance service) to arrive on the scene of a traffic accident and transport a patient to meet an ambulance service at another location.

Each ASA provider shall produce the necessary documentation for each vehicle operating under their control to the Board of County Commissioners. The initial information shall be completed on the ASA Application Form, which shall become an attachment to this Plan when a provider is granted an ASA.

All ASA providers shall submit vehicle maintenance records to validate their equipment’s safe and sound operation. In addition, all ASA providers must have an on-going safety program for setting and administrating safety and safe practices.

All ASA providers shall maintain records of an annual preventive maintenance program for all ambulances. At a minimum, the program shall include the following:

- Checks of fluid levels, lights, brakes, and tires each day the vehicle is to be used;
- Scheduled preventive maintenance in accordance with vehicle manufacturer recommendations;
- Detailed record-keeping by vehicle.

9. TRAINING

All ASA providers for Columbia County shall have an initial and continued education training program for their ambulance personnel which meets at the minimum, but is not limited to, the Administrative Rules 333-265-015 through 333-265-045 and ORS 682.204 through 682.265. In addition, all ASA medical personnel providing emergency medical first response in Columbia County shall meet continuing medical education and license renewal standards as identified by the Oregon Health Authority. Training will comply with the Oregon Health Authority and Department of Transportation curricula requirements.

VI. QUALITY ASSURANCE

To ensure the delivery of efficient and effective pre-hospital emergency medical care, an EMS Quality Assurance Program is hereby established. This program will include periodic case reviews by, peer review, and periodic review by a Physician or ambulance governing body as appointed by the Board of County Commissioners.

1. STRUCTURE

The Columbia County Board of Commissioners shall form the Columbia County Ambulance Service Area (ASA) Advisory Committee through the adoption of this Plan. The ASA Advisory Committee will be composed of no more than thirteen members representing a diverse segment of the community. The Committee should be represented by (but not limited to) a combination of the following: EMS Medical Director (or Physician equivalent), Public Health Department Representative, a provider from ASA 2 through 7, Columbia County Emergency Manager or appointed representative, Columbia 9-1-1 Communications Center representative, and three County community members. A quorum of at least seven members is required for any voting or administrative functions.

2. PROCESS

The Board of County Commissioners (Board), to ensure the delivery of the most efficient and effective prehospital emergency care possible with the available resources, has directed that the Columbia County ASA Advisory Committee be established. This committee will meet quarterly.

The basis for the ASA Advisory Committee will be a Continuous Quality Improvement (CQI) process. CQI is an inclusive, multidisciplinary process that focuses on identification of system-wide opportunities for improvement. The ASA Advisory Committee will utilize current standards to assess system structure, processes, and patient outcomes. Improvement efforts will focus on the root cause of the issue and formulate long-term solutions. Additionally, the ASA Advisory Committee can assist constituent groups to recognize and support excellence in performance and delivery of care. Columbia County efforts are both proactive and retrospective and draw from quality improvement efforts from a variety of industries, including published sources such as the National Association of EMS Physicians (NAEMSP).

The CQI process will analyze data on all aspects of the EMS system including dispatch, response times, medical supervision and control, patient care, EMS Provider and EMD performance, and other components. The data will come from a variety of sources - the dispatch agency, first

responder and ambulance provider agencies. Specific data can include computer databases, patient care charts and chart reviews and audits, patient complaints and patterns of complaints, patient outcomes, and others. The outcomes of the process are information, problem solving, and system improvement. These outcomes will serve as the basis for system change. Each ASA Franchise holder is required to maintain their own internal CQI process compliant with OAR 333-250-0320 and this Plan.

Complaints regarding violation of this ASA Plan shall be submitted in writing to the ASA Advisory Committee. The ASA Advisory Committee shall then review the matter and make recommendations or changes arising from such complaints or questions to the Board.

The ASA Advisory Committee shall also assist with resolving any problems involving system operations. Ongoing input may be provided by citizens, providers, or medical community members to the committee. Any input, such as a complaint, concern, idea, or suggestion for improvement, shall be submitted in writing to the committee for review. Should a change in the Plan be needed, the ASA Administrator will work with all the providers prior to presenting the findings to the Board of County Commissioners. The Board of County Commissioners shall have the authority for any changes to processes and/or modifications to the Columbia County ASA Plan.

3. COLUMBIA COUNTY ADMINISTRATOR NOTIFICATION

As part of the critical component of oversight, the County must be kept within the feed of real-time information regarding the ambulance service delivery in the County. It will be a requirement of ASA providers to notify the ASA Administrator of the following operational issues:

- All ambulance crashes;
- Maintenance issues for ambulances affecting normal deployment operations;
- Any staffing issues that cause the removal of a scheduled ambulance or closure of a fire station, not including times of critical calls or normal operational response needs;
- Large scale mass casualty events that deplete County EMS resources, separate from standard high call volume resource depletion;

All ASA providers will be required to inform the ASA Administrator via phone call of such operation issues as emergency operations allows. The County is aware of the necessity to prioritize information dissemination for time sensitive emergencies. ASA providers are asked to give best efforts when providing this timely information.

4. PROBLEM RESOLUTION

Problems involving protocol deviation by emergency medical services providers shall be referred to the respective medical director. Problems involving a non-compliant provider shall be reviewed by the ASA Advisory Committee with possible referral to Board if necessary. The Board may seek background data and recommendations from the ASA Advisory Committee in such instances. The Board shall provide notice to the affected provider and allow them the opportunity to issue comments. However, any member of the ASA Advisory Committee who may have a conflict of interest in the matter shall declare the conflict and refrain from participating in any recommendations made.

5. SANCTIONS FOR NON-COMPLIANT PERSONNEL OR PROVIDERS

Upon a recommendation by the ASA Advisory Committee, or its own motion, the Board of County Commissioners may suspend or revoke the assignment of an ASA upon a finding that the provider has:

- a. Willfully violated provisions of the Columbia County ASA Plan, an ordinance, or provisions of State or Federal laws and regulations; or
- b. Materially misrepresented facts or information given in the application for assignment of an ASA or as part of the review of the performance of the service furnished by the provider.

In lieu of the suspension or revocation of the assignment of an ASA, the Board may order that the violation be corrected and make the suspension or revocation contingent upon compliance with the order within the period set by the Board.

Notice of the Board's action shall be provided to the holder of the assignment, which shall specify the violation, the action necessary to correct the violation, and the date by which the action must be taken. If the holder of the assignment fails to take corrective action within the time required, the Board shall notify the holder that the assignment is suspended or revoked upon receipt of the notice. The Board or the Ambulance Service Area Committee shall notify the Oregon Health Authority of any complaints, sanctions, violations, or disciplinary action taken towards an EMS Provider or EMS Service operating in Columbia County.

A person receiving a notice of the assignment, denial of assignment, suspension, or revocation of assignment or a notice of corrective action, the failure of which may result in suspension or revocation of an assignment, may request a hearing before the Board by filing with the Board a written request for a hearing within fourteen (14) days of the notice, setting forth the reasons for requesting the hearing and the issues proposed to be reviewed. The filing of a hearing request shall stay the action, pending the hearing and the Board's final decision, unless a

change is required due to an immediate hazard to public safety. The Board shall set a time and place for the hearing. Within fourteen (14) days after the conclusion of the hearing, the Board shall affirm, reverse, or modify its original decision. Appeal of a Board decision is limited to a writ of review (ORS 34.100 to 34.102).

6. PENALTIES

Nothing in this Plan is intended to obviate the authority of the State regarding penalties for non-compliant personnel or providers under state rules, orders, and laws. The Board reserves the right to enforce both monetary and civil penalties on any ASA provider failing to maintain compliance with this Plan.

VII. COORDINATION

1. AUTHORITY

The ASA Administrator shall be responsible for the administration of the Plan and will make recommendations to the ASA Advisory Committee for changes to the Plan. The ASA Administrator will then make the necessary changes to the Plan and send out revisions upon approval of the Columbia County Board of Commissioners. (Columbia County Ordinance No. 2016-1)

2. COMPLAINT REVIEW PROCESS

Pre-hospital care consumers, providers, and the medical community may register complaints and have input in a variety of ways, such as:

- A complaint or input may be registered with the Columbia County Public Health Department for investigation. The findings report shall then be referred to the Columbia County ASA Advisory Committee with appropriate action recommendations. After consideration by the ASA Advisory Committee, a report shall be forwarded to the Columbia County Board of County Commissioners for recommended corrective actions if needed.
- A complaint or input may be registered directly with the Columbia County Board of Commissioners. The complaint shall then be forwarded to Columbia County Public Health Department for investigation by the ASA Advisory Committee.
- When the complaint has been reviewed by the ASA Advisory Committee, a report shall then be returned to the Columbia County Board of Commissioners with recommendations for possible appropriate actions to be considered.

3. MUTUAL AID AGREEMENTS

Each ASA provider shall sign a Mutual Aid Agreement to render assistance wherever possible, upon request, to augment the emergency medical response within Columbia County and thus give the best emergency services possible to the residents of Columbia County. All ASA Providers operating in Columbia County shall adopt written mutual aid agreements with neighboring agencies both inside Columbia County and outside agencies. Failure to do so prior to any franchise extension or renewal agreement with the County may result in that provider being removed from consideration.

All requests for mutual aid shall be made through the Columbia 911 via radio transmission or by phone at (503) 397-1521. All mutual aid agreements will be reviewed periodically but not less than every five years and modified as needed by mutual consent of all parties to the agreements. Mutual aid agreements shall be stored with each ASA Provider and the PSAP. The Administrator or the Board reserves the right to request copies of these agreements at any time.

4. DISASTER RESPONSE

The ASA Advisory Committee shall coordinate the EMS medical function of disaster planning with any formal disaster management plan developed and recognized by Columbia County, other appropriate County authorities, or other local government authorities within the County.

Any jurisdictional multiple-casualty incident (MCI) shall be examined and the situation in terms of its potential or actual magnitude of the disaster, and those having jurisdictional authority can request any appropriate additional resources that may be available via the Columbia 911 Communication District (Columbia 911) (503)-397-1521.

4.1 COUNTY RESOURCES OTHER THAN AMBULANCES

When resources other than ambulances are required for the provision of emergency medical services during a disaster, a request for additional resources shall be made through either Columbia 911 at (503) 397-1521 or Columbia County Emergency Management at (503) 366-3934. Emergency Management shall serve as the liaison between all local and state resource needs.

4.2 OUT OF COUNTY RESOURCES

When resources outside of Columbia County are required for the provision of emergency medical services during a disaster, a request for those resources shall be made through Columbia County Emergency Management. This can be made through Columbia 911 (503-397-1521) or by contacting the on-duty Emergency Management representative directly at (503)

366-3934. Requests can also be made to Oregon Emergency Response System (OERS) for state level relief (1-800-452-0311), but only once Emergency Management has exhausted all inner-county resources.

4.3 MASS CASUALTY INCIDENT (MCI) PLAN

Columbia County, as of October 2023, does not have a formal MCI Plan adopted to include in this ASA Plan. The Columbia County ASA Advisory Committee will work with Columbia County Emergency Management in the formal creation and adoption of an MCI Plan, with OHA Area Trauma Advisory Board (ATAB) recommendations, to meet the County's needs. Columbia County commits to having a formal MCI Plan adopted and exercised by September of 2024. Following its adoption, ASA Providers shall adhere to this new MCI plan while operating in Columbia County and an amended ASA Plan shall be submitted to the OHA for review.

The purpose of the Mass Casualty Incident (MCI) Plan is to provide guidance to EMS response personnel in the coordination or response activities relating to mass casualty/multi-casualty incidents in Columbia County. An MCI Plan is intended for use when any single or combination of incidents depletes the resources of any single provider during the ordinary course of daily operations. All ASA Providers shall adopt the MCI Plan.

The MCI Plan shall identify the responsibility of the Provider concerning:

- i. Coordination;
- ii. Communication;
- iii. Staging;
- iv. Triage; and
- v. Transportation.

4.4 PERSONNEL AND EQUIPMENT RESOURCES

Emergency contact lists for personnel and equipment resources are available at the Columbia 911. Public safety agencies are requested annually to update their lists.

4.5 NON-TRANSPORTING EMS PROVIDER

City fire departments and rural fire protection districts currently provide first-response services in the County. Each fire department or district determines the deployment patterns necessary to respond to fires, rescue situations, and medical calls. These deployment patterns are based on each community's needs and operational and financial priorities and constraints. Fire departments and districts respond to all time-critical 9-1-1 medical calls and all calls that require specialty rescue, extrication, or non-medical technical response. The scope and

intensity of medical services provided by fire departments, districts, and jurisdictions may evolve over time.

4.6 HAZARDOUS MATERIALS (HAZ-MAT)

HAZ-MAT response is the responsibility of the fire districts and departments within Columbia County. HAZ-MAT response plans include identifying the hazard, its effect on people, and the appropriate actions for neutralizing it, decontaminating exposed people and environments, and providing necessary medical care in the pre-hospital and hospital settings. Transport and receiving hospital standards for exposed patients are coordinated through HAZ-MAT, special operations teams, and the receiving hospitals. Hazard evaluation is done frequently with involvement from the specialty teams, EMS Medical Doctor, and receiving hospital representatives (if applicable). The standards and procedures vary based on the nature of the exposure.

All Columbia County fire agencies are trained to the Hazardous Materials Operations level, as defined by the National Fire Protection Agency (NFPA) and the Center for Domestic Preparedness (CDP). Should an incident require personnel of higher training, fire agencies will contact the Oregon Emergency Response System (OERS) at 1 (800) 452-0311 and request a regional Haz-Mat Team to respond. The nearest agency that covers Columbia County is from Portland Fire & Rescue and will coordinate all resource needs with the fire agency incident command, when requested.

4.7 SEARCH AND RESCUE

Search and rescue operations are the responsibility of the Columbia County Sheriff. The Sheriff's Office serves as incident commander for search and rescue operations. EMS and fire responders may provide resources and personnel as requested by the incident commander. To contact the Sheriff's Office Search and Rescue (SAR) Coordinator, please call (503)-366-4611 or through Columbia 911 and request the Sheriff's Office SAR Coordinator.

4.8 EXTRICATION

Extrication of victims from entanglement will be the responsibility of the fire agency holding jurisdiction. The fire department will serve as the incident command for all extrication and entanglement operations. Other EMS and fire agencies may provide resources as requested by incident command. Columbia County fire agencies with extrication capabilities are:

- a) Sauvie Island Fire District
Non-emergency contact information - (503) 621-1242
- b) Scappoose Rural Fire Protection District
Non-emergency contact information - (503) 543-5026

- c) Columbia River Fire & Rescue
Non-emergency contact information - (503) 397-2990
- d) Clatskanie Rural Fire Protection District
Non-emergency contact information - (503) 728-2025
- e) Mist-Birkenfeld Rural Fire Protection District
Non-emergency contact information - (503) 755-2710
- f) Vernonia Rural Fire Protection District
Non-emergency contact information - (503) 429-8252

It is not feasible to expect consistent monitoring of the above phone numbers for each district given staffing resources. All requests for extrication needs should go through Columbia 911 PSAP at (503) 397-1521, Columbia County Emergency Management at (503) 366-3934, or OERS at 1 (800) 452-0311. District maps for each fire agency are in Appendix 4.

4.9 SPECIALIZED RESCUE

Columbia County fire agencies work together to provide specialized rescue services during emergency incidents. These include services such as swift water rescue, low-angle rope or high-angle rope rescue. Should other specialized services be needed, the fire agency holding jurisdiction and holding incident command will make this request through Columbia 911 PSAP for local resources, or outside agencies may request these resources through OERS at 1 (800) 452-0311 for both local and state resources.

4.10 EMERGENCY COMMUNICATION AND SYSTEM ACCESS

4.10.1 TELEPHONE

Columbia 9-1-1 is the Public Safety Answering Point. This Center shall receive all emergency service requests in Columbia County. Persons having access to telephone service will have access to the Columbia 9-1-1 by dialing 9-1-1. This communications center can also be contacted via a non-emergency phone line that is monitored 24 hours a day, 7 days a week at (503) 397-1521.

4.10.2 DISPATCH PROCEDURES

The Columbia 911 dispatcher shall notify the appropriate EMS personnel within sixty (60) seconds of receipt of a medical call 90% of the time. The dispatcher will obtain from the caller and dispatch first responders with the following:

- a. Nature of the incident;
- b. Location of the incident;
- c. Any specific instructions or information that may be pertinent to the incident;
- d. Any updates as the information is obtained.

EMS personnel shall inform Columbia 911 by radio when any of the following occurs;

- a. In-service;
- b. Enroute to scene or destination and type of response;
- c. Arrival on scene or destination; and scene size up if appropriate;
- d. Arrival at patient(s) side;
- e. Transporting patient(s) to the hospital or medical facility; the number of patients (and name of the facility and level of transport priority, if appropriate); and
- f. Arrival at receiving facility.

Ambulance personnel shall inform the receiving hospital by radio of the following:

- a. Unit identification number;
- b. Age and sex of each patient;
- c. Condition and chief complaint of each patient;
- d. Vital signs of each patient;
- e. Treatment rendered; and
- f. Estimated time of arrival.

4.10.3 RADIO SYSTEM

All emergency medical responders and ambulance services will have the capability of operating on the Columbia County radio frequencies. Columbia 9-1-1 and the emergency medical providers operate on Very High Frequency (VHF) radio system for day-to-day operations. As Columbia County has no hospital within its borders, it is highly recommended that transport capable units also have at their disposal either a Multnomah County or a Washington, Clackamas, Newberg (WCN) 700/800 MHz radio systems radio for interoperability.

Columbia County operates on the following channels:

| County | Dept | Name | Long Name | RxFreq (output) | TxFreq (input) | Rx CG | Tx CG |
|----------|------|----------|---------------|-----------------|----------------|-------|-------|
| Columbia | F | COL F1 | COL FIRE DISP | 154.13000 | 159.15000 | 186.2 | 162.2 |
| Columbia | F | COL F2 | COL F2 MEDNET | 153.87500 | 157.49250 | 186.2 | 146.2 |
| Columbia | F | COL F3 | COL F3 TAC3 | 153.17750 | 156.01500 | 186.2 | 162.2 |
| Columbia | F | COL F4 | COL F4 TAC4 | 154.87500 | 157.47750 | 186.2 | 192.8 |
| Columbia | F | COL MOB1 | COL FIRE MOB1 | 154.29500 | 154.29500 | CSQ | 107.2 |
| Columbia | F | COL MOB2 | COL FIRE MOB2 | 154.40000 | 154.40000 | CSQ | 107.2 |
| Columbia | SO | COL L5 | COL L5 COMMN | 154.35500 | 158.88000 | 203.5 | 173.8 |

Columbia 911 shall:

1. Restrict access to authorized personnel only, as current software allows;
2. Meet state fire marshal standards;
3. Maintain radio consoles capable of communication directly with all first response agencies throughout Columbia County;
4. Maintain all dispatch logs and recordings required by the Oregon Revised Statutes;
5. Meet all Federal-state and local laws and standards for operation;
6. Be equipped with a back-up power source capable of maintaining all functions of the center.

An ASA Provider shall equip and maintain communication equipment in each ambulance that allows for the transmission and reception with dispatch, medical resource hospitals, and mutual aid resources. It is up to the ambulance service in each ASA district to coordinate with Columbia 911 on radio system needs and updates. Columbia County, and its PSAP, are not responsible for any financial obligations accrued by ambulance providers as part of this requirement.

4.10.4 COMPUTER-AIDED DISPATCH (CAD) INTEGRATION

Streamlining all emergency medical requests to expedite high quality patient care is the top priority of the County. All dispatched emergency medical requests in Columbia County must use a priority dispatch EMD system. Therefore, any contracted ASA Provider who does not utilize the Columbia 911 PSAP for their dispatch operations shall complete a CAD integration agreement with Columbia 911. This integration agreement should allow for the automatic flow of information between Columbia 911 PSAP, first response units, and out of County ambulance agencies.

Furthermore, the interface should outline the expectations of functionality such as:

- a. 2-way (bi-directional) transfer of CAD incidents to and from the Columbia 911 and the ambulance service;
- b. The interface shall include electronic acknowledgement of receipt of the CAD incident assignment;
- c. The ambulance service shall be required to maintain unit status during emergency incident assignments with Columbia 911;
- d. The ambulance service shall be required to report when low levels of ambulance resource availability to Columbia 911;

Columbia County or its PSAP are not responsible for any financial obligations accrued by ambulance providers as part of this requirement.

4.10.5 EMERGENCY MEDICAL SERVICES DISPATCHER TRAINING

All Emergency Medical Dispatchers (EMDs) at both Columbia 911 and at the ambulance companies shall be trained to meet or exceed Emergency Medical Dispatcher standards set

forth by the USDOT Dispatcher National Standard Curriculum or minimum standards required for dispatchers by the Oregon Department of Public Safety Standards and Training (DPSST). The EMS Medical Director is responsible for the medical protocols used by these dispatchers and for the medical supervision of their performance and may set forth additional requirements.

4.10.6 MASS GATHERINGS

The Board of County Commissioners adopted a Mass Gathering Ordinance to create a standard approach towards the handling of such high-risk events outside of incorporated city limits. Event organizers are required to submit the necessary permits through Columbia County Land Development and must address how organizers plan to incorporate public safety and EMS response; specifically, EMS dedicated staff given anticipated patron attending and ambulance ingress and egress during medical emergencies.

VIII. PROVIDER SELECTION

1. INITIAL ASSIGNMENT

The County has established seven Ambulance Service Areas. A visual and written description of each ASA is attached in the appendices of this Plan. The Board of County Commissioners delegates responsibility for assuring appropriate Ambulance Services to the County Public Health Department. The County issue franchises for Ambulance Services. Each ASA Provider is chosen through a competitive application process. This process will be published as a public call for applications.

A. FIRST RESPONSE

The County may enter into intergovernmental agreements with any fire department or district(s) within the County that are interested in providing EMS first response. These agreements may include compensation.

2. REASSIGNMENT

If a reassignment of an ASA is necessary, the ASA Advisory Committee shall make a written recommendation to the Board. The ASA Advisory Committee shall develop appropriate criteria, utilizing the selection process described in this Plan to be presented to the Board for consideration and/or action by the Board.

3. APPLICATION FOR AN ASA

Columbia County currently has both public and private ASA Providers who have been serving those individual ASAs for several years. The Public Health Administrator will form and chair a review committee of the following potential person(s): Columbia County Counsel, Public Health Medical Director, and the Public Health Department Director. The committee will review each

application for content and proposed care services provided. Should more than one agency apply for an individual ASA, the committee may request additional information from all interested parties. This may include a summary of how the proposed coverage will benefit the citizens, improve emergency medical care delivery, impacts to current first response system, or other documents as requested. Once all information has been received, the review committee will make a written recommendation to the Board. Once an ASA is awarded, the Board and the Provider will enter into an agreement for Ambulance Services for a term of five (5) years. All contracts require the approval of the Board of County Commissioners, as required by Ordinance.

4. NOTIFICATION OF VACATING AN ASA

If an ASA Provider wishes to vacate its ASA, it shall provide at least sixty (60) days' written notice to the Ambulance Service Administrator. The ASA Provider must provide notification in accordance with the provisions of this plan or the agreement for Ambulance Services.

5. MAINTENANCE OF LEVEL OF SERVICES

All ASA providers contracted by the County will be required to maintain all medical service levels outlined in each approved contract. If an ASA Provider cannot comply with the standards promulgated for the ASA by this Plan, or each ASA franchise contract, the Provider will notify the Ambulance Service Administrator in writing of its inability to comply and identify which standards are involved. This notification should be made at least sixty (60) days before any non-compliance or as soon as practical after an ASA Provider becomes aware of non-compliance. The Administrator will determine if other qualified Providers who can abide by the standards are available for the ASA. If the Administrator determines no other qualified Providers are available, it may apply to the Oregon Health Authority, Emergency Medical Services, and Trauma Systems Section under ORS 682.079 for a variance from the standards so that continuous ambulance services may be maintained, by the existing provider, in the ASA.

5.1 FAILURE TO NOTIFY

The County holds all the ASA Providers to high standards for the protection and care of its citizens. Any ASA Provider who fails to notify the Administrator of any disruption to contracted services at least sixty (60) days prior may face financial penalties or revocation of contracted services. The Columbia County Board of Commissioners reserves the right to determine penalties on a case-by-case basis in congruence with OHA policies and ORS, and County laws, rules, and regulations.

5.2 REVOCATION OF AN ASA

If an ASA is revoked from an ASA Provider, the ASA Administrator will work with surrounding ASA Providers to provide temporary emergency medical services coverage in the vacated ASA while a replacement is located. Appointment of an ASA Provider to replace a revoked ASA Provider will follow the franchise application process described herein.

6. RENEWAL PROCESS FOR AN ASA

The initial term for an ASA Provider franchise will be for five years. An additional two terms of five years each will be granted to Providers who have demonstrated compliant performance during the current assignment term and who request to receive an extension. An extension request shall be made in writing to the Administrator not more than 180 days and not less than 120 days prior to the expiration of franchise agreement, or such other times as may be allowed by the Board. The Administrator will recommend such term extensions to the Board for approval. Extensions shall be approved by Board Order.

IX. COUNTY ORDINANCES AND RULES

All Columbia County ordinances and rules surrounding the adoption and management of a County ASA plan can be found in Appendix 4 of this Plan. Ordinance No. 2016-1, in compliance with ORS 682.062 and OAR 333-260-0000 to 333-260-0070 was adopted by the Columbia County Board of Commissioners on the 21st day of February, 2024.

X. APPENDICES (see next page.)

Appendix 2 - ASA Narrative Descriptions

Ambulance Service Area – 1 Sauvie Island

The Sauvie Island Area includes all portions of Sauvie Island within Columbia County North and South of the county line. They will be included in the Columbia County ASA Plan. Multnomah County assigns ambulance service and administers the response zones for ASA 1.

Boundaries:

West Boundary: Multnomah Channel

North Boundary: Columbia River

East Boundaries: Columbia River

South Boundaries: County Line

Ambulance Service Area – 2 Scappoose

The Scappoose area is an incorporated city with a population of 8,010 as of the 2020 census. Therefore, Scappoose is classified as “Suburban” according to the Trauma System population density requirement.

Boundaries:

North Boundary: Beginning at the east bank of Multnomah Channel at River Marker 2. Thence west to the east bank of Scappoose Bay. Then southerly along the east bank of Scappoose Bay to the mouth of Scappoose Creek. Then southerly along Scappoose Creek to a point due east of the intersection of Columbia River Hwy and Slavens Rd. Thence due west to the intersection of Columbia River Hwy and Slavens Rd. Thence westerly along the north boundary of Slavens Rd to its intersection with Marracci Rd. Thence northerly along the west boundary of Marracci Rd to the north boundary of Garden View Estates Subdivision. Thence westerly along the north boundary Garden View Estates to the NW corner of Garden View Estates. Thence southerly along the west boundary of Garden View Estates to a point east of the NE corner of section 25 T4N R2W. Thence west to the NE corner of section 25 T4N R2W. Thence westerly along the north section lines of 25, 26, and 27 to the NW corner of section 27. Thence northerly along the east section lines of sections 21, 21, and 16 T4N R2W to the NE corner of section 16. Thence westerly along the north section line of 16 to the NW corner of section 16. Thence northerly along the east section line of section 8 and 5 T4N R2W to the NE corner of section 5. Thence westerly along the north section line of section 5 to the SW corner of the SE ¼ of section 32, T5N R2W. Thence northerly along the west line of the SE ¼ of section 32 T5N R2W to the NE corner of the south half of the SW ¼ of section 32, T5N R2W. Thence westerly along the north line of the south half of the SW ¼ of section 32 and the south half of the SE ¼ of section 31 T5N

R2W to the NW corner of the south half of the SW $\frac{1}{4}$ of section 31. Thence southerly along the west line of the SE $\frac{1}{4}$ of section 31 to the SW corner of the SE $\frac{1}{4}$ of section 31 T5N R2W. Thence westerly along the south line of section 31 T5N R2W and sections 36, 35, 34, 33, and 32 of T5N R3W to the NW corner of section 5, T4N R3W.

South Boundary: Beginning at the SW corner of section 32 T4N R3W. Thence easterly along the south section lines of 32, 33, and 34 to the SE corner of section 34, T4N R3W. Thence southerly along the west section lines of 2 and 11, T3N R3W to the SW corner of section 11. Thence easterly along the south section lines of section 11 and 12, T3N R3W to the SE corner of section 12. Thence southerly along the west section line of section 18, T3N R2W to the SW corner of section 18. Thence westerly along the south section line of sections 18, 17, and 16, T3N R2W to the SE corner of section 16. Then southerly along the west section line of section 22, T3N R2W to the SW corner of section 22 on the south boundary of Columbia County. Thence easterly along the south boundary of Columbia County to the east bank of the Multnomah channel.

East Boundary: Beginning at the intersection of the south boundary of Columbia County and the east bank of the Multnomah channel. Thence northerly along Multnomah Channel to River Marker 2 on the Multnomah channel.

West Boundary: Beginning at the NW corner of section 5, T4N R3W. Thence southerly along the west section line of section 5 to the SW corner of section 5. Thence southeasterly in a direct line to the SE corner of the NE $\frac{1}{4}$ of the NE $\frac{1}{4}$ of section 8 T4N R3W. Thence southerly along the east section line of section 8 T4N R3W to the northerly boundary of the Crown Zellerbach trail. Thence easterly along the northern boundary of the Crown Zellerbach trail to a point north of milepost 7 of Scappoose Vernonia Hwy. Thence south to the south boundary of the NE $\frac{1}{4}$ of the NW $\frac{1}{4}$ of section 16, T4N R3W. Thence westerly along the south section line to the SE corner of the NE $\frac{1}{4}$ of the NE $\frac{1}{4}$ of section 17 T4N R3W. Thence westerly along the south section line of the north half of the north half of section 17 to the east section line of section 18 T4N R3W. Thence southerly along the east section line of sections 18, 19, 30, and 31 of T4N R3W to the SW corner of section 32, T4N R3W.

Ambulance Service Area – 3 St. Helens

St. Helens is an incorporated city with a population of 13,817 as of the 2020 census. Therefore, St. Helens is classified as “Suburban” according to the Trauma System population density requirement.

Boundaries:

North Boundary: Beginning at the intersection of the west boundary of Apiary Rd and the south line of section 4, T5N R3W. Thence easterly along the south section line of sections 4, 3, 2, and

1 of T5N R3W to the SE corner of section 1 of T5N R3W. Thence northeast to the NW corner of section 4, T5N R2W. Thence along the north section line of sections 4 and 3, T5N R2W to the NE corner of section 3. Thence northeast to the intersections of Tide Creek Rd and Columbia River Hwy. Thence east to the west bank of the Columbia River.

South Boundary: Beginning at the point of intersection of the east bank of Scappoose Bay and the north line of the Stoughton DLC. Thence west along the north line of the Stoughton DLC to the intersection of Columbia River Hwy and Slavens Rd. Thence westerly along the north boundary of Slavens Rd to its intersection with Marracci Rd. Thence north along the west boundary of Marracci Rd to the north boundary of Garden View Estates Subdivision. Thence west along the north boundary Garden View Estates to the NW corner of Garden View Estates. Thence southerly along the west boundary of Garden View Estates to a point east of the NE corner of section 25 T4N R2W. Then west along the north section lines of 25, 26, and 27 to the NW corner of section 27, T4N R2W. Thence westerly along the north section line of section 5 to the SW corner of the SE $\frac{1}{4}$ of section 32, T5N R2W. Thence northerly along the west line of the SE $\frac{1}{4}$ of section 32 T5N R2W to the NE corner of the south half of the SW $\frac{1}{4}$ of section 32, T5N R2W. Thence westerly along the north line of the south half of the SW $\frac{1}{4}$ of section 32 and the south half of the SE $\frac{1}{4}$ of section 31 T5N R2W to the NW corner of the south half of the SW $\frac{1}{4}$ of section 31. Thence southerly along the west line of the SE $\frac{1}{4}$ of section 31 to the SW corner of the SE $\frac{1}{4}$ of section 31 T5N R2W. Thence westerly along the south line of section 31 T5N R2W and section 36, 35, 34, 33 of T5N R3W to the SW corner of the SE $\frac{1}{4}$ of section 33, T5N R3W.

East Boundary: Beginning at a point due east of the intersection of Tide Creek Rd and Columbia River Hwy. Thence southeasterly along the west bank of the Columbia River to the east bank of Scappoose Bay. Thence southerly along the east bank of Scappoose Bay to a point on the north line of the Stoughton DLC.

West Boundary: Thence north to the NE corner of the NE $\frac{1}{4}$ of the NE $\frac{1}{4}$ of section 21, T5N R3W. Thence west along the north line of section 21, T5N R3W, to the SE corner of section 16, T5N R3W. Thence north along the east section line of 16 to the SE corner of the SE $\frac{1}{4}$ of the NE $\frac{1}{4}$ of section 16, T5N R3W. Thence east to the west boundary of Karth Rd. Thence along the west boundary of Karth Rd to its intersection with Apiary Rd. Thence northerly along the west boundary of Apiary Rd to the point of beginning.

Ambulance Service Area – 4 Rainier

Rainier is an incorporated city with a population of 1,911 as of the 2020 census. Therefore, Rainier is classified as “Suburban” according to the Trauma System population density requirement.

Boundaries:

North Boundary: Beginning at a point where the easterly bank of the Rinearson Slough intersects the Columbia River. Thence southeasterly along the west bank of the Columbia River to a point on the West bank of the Columbia River and east boundary of Section 32, T6N R1W, due east of the intersection of Tide Creek Rd and the Columbia River Hwy.

South Boundary: Beginning at the point on the West bank of the Columbia River and east boundary of Section 32, T6N R1W, due east of the intersection of Tide Creek Rd and the Columbia River Hwy. Thence due west to the intersection of Tide Creek Rd and the Columbia River Hwy. Thence Southwesterly to the NW corner of section 2, T5N R2W. Thence west along the north section line of sections 3 and 4 of T5N R2W to the NW corner of section 4. Thence southwesterly to the intersection of Anliker Rd and Meissner Rd. Thence southwesterly to the NW corner of section 7, T5N R2W. Thence west along the north section lines of sections 12, 11, 10, and 9 of T5N R3W to the intersection of the north line of section 9, T5N R3W, and the west boundary of Apiary Rd.

East Boundary: Beginning at a point where the easterly bank of the Rinearson Slough intersects the Columbia River. Thence southeasterly along the west bank of the Columbia River to a point on the West bank of the Columbia River and east boundary of Section 32, T6N R1W, due east of the intersection of Tide Creek Rd and the Columbia River Hwy.

West Boundary: Beginning at the intersection of the north line of section 9, T5N R3W, and the west boundary of Apiary Rd. Thence northerly along the west boundary of Apiary Rd to the west line of Section 3, T5N R3W. Thence north along the west section line of section 3, T5N R3W, and sections 34 and 27, T6N R3W, to the NW corner of section 27, T6N R3W. Thence west along the north section line of section 28 to the SW corner of section 21, T6N R3W. Thence north along the west line of section 21 to the SW corner of the NW $\frac{1}{4}$ of the NW $\frac{1}{4}$ of section 21. Thence east to the SE corner of the NW $\frac{1}{4}$ of the NW $\frac{1}{4}$ of section 21, T6N R3W. Thence north to the NW corner of the SW $\frac{1}{4}$ of the SE $\frac{1}{4}$ of section 16, T6N R3W. Thence east to the NE corner of the NE $\frac{1}{4}$ of the SE $\frac{1}{4}$ of section 16, T6N R3W. Thence north along the east section line of sections 16, 9, and 4 of T6N R3W to the SW corner of section 34 T7N R3W. Thence east along the south line of section 34 to the SE corner of the SW $\frac{1}{4}$ of Section 34, T7N R3W. Thence north to the NW corner of the SE $\frac{1}{4}$ of section 22, T7N R3W. Thence east to the NE corner of the SE $\frac{1}{4}$ of section 22, T7N R3W. Thence, North along the east line of sections 22, 15, 10, and 3, T7N R3W to the Rinearson Slough. Thence Northerly along the easterly bank of the Rinearson Slough to the Columbia River.

Ambulance Service Area – 5 Clatskanie

Clatskanie is an incorporated city with a population of 1,716 as of the 2020 census. Therefore, Clatskanie is classified as “Suburban” according to the Trauma System population density requirement.

The following described land in Clatsop County, OR, shall be included in Ambulance Service Area 5 (Clatskanie).

- In T7N R6W: Section 1, 2, and 3.
- In T8N R6W: Section 22, 25, 26, 27, 34, 35 and 36

Boundaries:

North Boundary: Beginning at the NW corner of Columbia County at the intersection of the west boundary of Columbia County with Columbia River. Thence East along the Columbia River to its intersection with the Rinearson Slough.

South Boundary: Beginning at the SW corner of the SE ¼ of section 34 T7N R3W. Thence west along the south section line to the SW corner of section 34, T7N R3W. Thence north along the east section line of 33, T7N R3W to the NE corner of the SE ¼ of section 33, T7N R3W. Thence west to the NW corner of the SE ¼ of section 33, T7N R3W. Thence south to the SW corner of the SE ¼ of section 4, T6N R3W. Thence West along the south section lines of 4, 5, and 6 to the SW corner of section 6, T6N R3W. Thence south along the west section lines of sections 7 and 18, T6N R3W, to the SW corner of section 18, T6N R3W. Thence west along the south section lines of section 13, 14, 15, and 16 of T6N R4W to the SW corner of section 16, T6N RW. Thence North along the west section line of section 16 to the SE corner of section 8, T6N R4W. Thence west along the south section line of section 8 to the SW corner of section 8, T6N R4W. Thence north along the west section lines of sections 8 and 5, T6N R4W, to the NE corner of section 6, T6N R4W. Thence West along the north section line of section 6 to the NW corner of section 6, T6N R4W. Thence north along the east section line of section 36, T7N R5W to the NE corner of the SE ¼ of section 36. Thence west to the NW corner of the SE ¼ of section 35, T7N R5W. Thence north to the NW corner of the NE ¼ of section 26, T7N R5W. Thence east to the NE corner of section 26, T7N R5W. Thence north to the NE corner of section 23, T7N R5W (subject to change subject to agency agreement). Thence west along the north section lines of sections 23, 22, 21, 20, and 19 of T7N R5W to the west boundary of Columbia County.

East Boundary: Beginning at the NW corner of section 19, T7N R5W on the west boundary of Columbia County. Thence north along the west boundary of Columbia County to the NW corner of Columbia County.

West Boundary: Beginning at a point where the Columbia River intersects Rinearson Slough. Thence South along the east bank of the Rinearson Slough to the east section line of section 3, T7N R3W. Thence south along the east section lines of section 3, 10, 15, and 22 of T7N R3W to the NE corner of the SE ¼ of section 22. Thence West along the north line of the SE ¼ of section 22 to the NW corner of the SE ¼ of section 22, T7N R3W. Thence south along the west line of the SE ¼ of section 22 and the NE ¼ and SE ¼ of sections 27 and 34, T7N R3W to the south line of section 34 T7N R3W.

Ambulance Service Area – 6 Mist-Birkenfeld

Mist-Birkenfeld is an unincorporated community with a population of 1,388 as of the 2020 census. This area is in the middle of the western section of South Columbia County. This area includes the communities of Mist, Birkenfeld, Natal, and all the Mist-Birkenfeld Rural Fire Protection District.

Boundaries:

North Boundary: Beginning at the NW corner of section 19 T7N R5W also being on the west boundary of Columbia County. Thence east along the north section line of sections 19, 20, 21, 22, and 23 of T7N R5W to the NE corner of section 23, T7N R5W. Thence south along the west line of section 23 to the SE corner of section 23. Thence west (subject to change based on agency agreement) along the south section line of section 23 to the NW corner of the east 1/2 of section 26, T7N R5W. Thence south along the west line of the east half of sections 26 and 35 to the SW corner of NE ¼ of section 35, T7N R5W. Thence east along the south line of the north ½ of section 36 to the east line of section 36. Thence south along the east line of section 36 to the NW corner of section 6, T6N R4W. Thence along the north section line of 6 to the NE corner of section 6, T6N R4W. Thence south along the east line of sections 6 and 7 to the NW corner of section 17, T6N R4W. Thence south along the east line of section 17 to the SW corner of section 16 T6N R4W. Thence east along the south section line of section 16, 15, 14, and 13 of T6N R4W to the SE corner of section 13. Thence North along the east section lines of 18 and 7 T6N R3W to the NW corner of section 7. Thence east along the north section lines of 7, 8, 9 T6N R3W to the SW corner of the SE ¼ of section 4, T6N R3W. Thence north along the east line of the SW ¼, NW ¼ of section 4 T6N R3W and the SE ¼ of section 33 T7N R 3W to the NW corner of the SE ¼ of section 33. Thence East along the north line of the SE ¼ of section 33 to the NE corner of the SE ¼ of section 33 T7N R3W.

South Boundary: Beginning at the intersection of the west boundary of Karth Rd and the north section line of section 22, T5N R3W. Thence west along the north section lines of sections 22, 21, 20, and 19 of T5N R3W and 24, 23, 22, 21, 20, and 19 of T5N R4W and sections 24, 23, 22,

21, 20, 19 of T5N R5W to the west boundary of Columbia County also being the SW corner of section 18, T5N R5W.

East Boundary: Beginning at the NE corner of the SE $\frac{1}{4}$ of section 33 T7N R3W. Thence south along the south line of section 33, T7N R3W, and sections 4, 9, and 16 of T6N R3W to the NE corner of the SE $\frac{1}{4}$ of the SE $\frac{1}{4}$ of section 16. Thence west along the north line of the SE $\frac{1}{4}$ and SW $\frac{1}{4}$ of the SE $\frac{1}{4}$ of section 16 to the NW corner of the SW $\frac{1}{4}$ of the SE $\frac{1}{4}$ of section 16. Thence south along the east line of the SW $\frac{1}{4}$ of section 16 to the south section line of section 16. Thence West along the south line of section 16 to the NE corner of the NW $\frac{1}{4}$ of the NW $\frac{1}{4}$ of section 21, T6N R3W. Thence South along the east line of the NW $\frac{1}{4}$ of the NW $\frac{1}{4}$ of section 21 to the SE corner of the NW $\frac{1}{4}$ of the NW $\frac{1}{4}$ of section 21, T6N R3W. Thence West along the south line of the NW $\frac{1}{4}$ of the NW $\frac{1}{4}$ of section 21 to the west section line of 21, T6N R3W. Thence South along the west section line of 21 to the SW corner of section 21 T6N R3W. Thence East along the south section line of 21 to the NE corner of section 28 T6N R3W. Thence south along the east section line of 28 and 33 of T6N R3W and section 4, T5N R3W to Apiary Rd. Thence southwesterly along the southeasterly boundary of Apiary Rd to Karth Rd. Thence southeasterly along the westerly boundary of Karth Rd to the north section line of section 22 T5N R3W.

West Boundary: Thence south along the south line of section 33, T7N R3W, and sections 4, 9, and 16 of T6N R3W to the NE corner of the SE $\frac{1}{4}$ of the SE $\frac{1}{4}$ of section 16. Thence west along the north line of the SE $\frac{1}{4}$ and SW $\frac{1}{4}$ of the SE $\frac{1}{4}$ of section 16 to the NW corner of the SW $\frac{1}{4}$ of the SE $\frac{1}{4}$ of section 16. Thence south along the east line of the SW $\frac{1}{4}$ of section 16 to the south section line of section 16. Thence West along the south line of section 16 to the NE corner of the NW $\frac{1}{4}$ of the NW $\frac{1}{4}$ of section 21, T6N R3W. Thence South along the east line of the NW $\frac{1}{4}$ of the NW $\frac{1}{4}$ of section 21 to the SE corner of the NW $\frac{1}{4}$ of the NW $\frac{1}{4}$ of section 21, T6N R3W. Thence West along the south line of the NW $\frac{1}{4}$ of the NW $\frac{1}{4}$ of section 21 to the west section line of 21, T6N R3W. Thence South along the west section line of 21 to the SW corner of section 21 T6N R3W. Thence East along the south section line of 21 to the NE corner of section 28 T6N R3W. Thence south along the east section line of 28 and 33 of T6N R3W and section 4, T5N R3W to Apiary Rd. Thence southwesterly easterly boundary of Apiary Rd to Karth Rd. Thence southeasterly along the westerly boundary of Karth Rd to the north section line of section 22 T5N R3W.

Also including the following described land in Clatsop County:

- In T6N R6W:
- The W $\frac{1}{2}$ of the NE quarter and the SE quarter of section 21.

- The SE quarter, the S ½ of the NE quarter, the S ½ of the NW ¼ of the NE quarter, the S ½ of the NE ¼ of the NE quarter, the S ½ of the NW quarter, S ½ of the NW ¼ of the NW quarter, and the S ½ of the NE ¼ of the NW quarter of section 22.
- The W ½ of the NW quarter and the W ½ of the SW quarter of section 27. The E ½ of section 28.
- The E ½ of the SW quarter, the SE quarter, the NW ¼ of the NE quarter, the NE ¼ of the NE quarter, and the SE ¼ of the NE quarter of section 33.
- The N ½ of the NW quarter of section 34. In T5N R6W, The NW quarter, the NW ¼ of the SW quarter, and the NE ¼ of the SW quarter of section 4. The E ½ of the SE ¼ of the NE quarter and the E ½ of the NE ¼ of the SE quarter of section 5.

Ambulance Service Area – 7 Vernonia

Vernonia is an incorporated city with a population of 2,374 as of the 2020 census.

Boundaries:

North Boundary: Beginning at the NW corner of section 19, T5N R5W. Thence east along the north section lines of sections 19, 20, 21, 22, 23, 24 of T5N R5W and sections 19, 20, 21, 22, 24 of T5N R4W and sections 19, 20, 21, T5N R3W to the NE corner of the NE ¼ of the NE ¼ of section 21, T5N R3W.

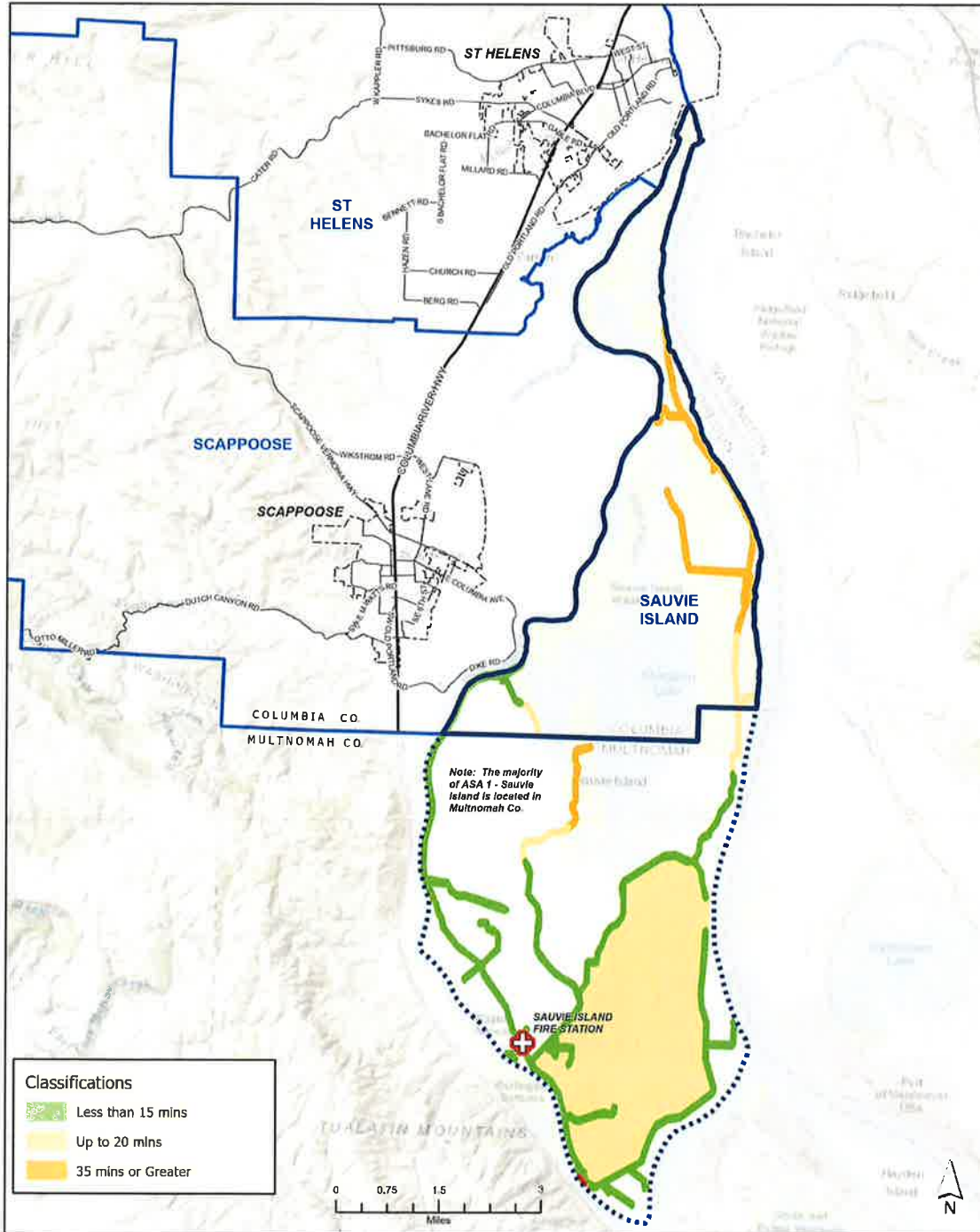
South Boundary: Beginning at the SE corner of section 31, T4N R3W on the south boundary of Columbia County. Thence west along the south boundary of Columbia County to its intersection with the north boundary of NW Sunset Hwy. Thence westerly along the north boundary of NW Sunset Hwy to the point of intersection with the south boundary of Columbia County. Thence west along the southern border to the SW corner of Columbia County at the SW corner of section 31, T4N R5W.

East Boundary: Beginning at the NE corner of the NE ¼ of the NE ¼ of section 21 T5N R3W. Thence south to the SE corner of the SE ¼ of the SE ¼ of section 33, T5N R3W. Thence west along the section line of sections 33 and 32, T5N R3W to the SW corner of section 32, T5N R3W. Thence southeasterly in a direct line to the SE corner of the NE ¼ of the NE ¼ of section 8 T4N R3W. Thence south along the east section line of section 8 T4N R3W to the northerly boundary of the Crown Zellerbach trail. Thence easterly along the northern boundary of the Crown Zellerbach trail to a point north of milepost 7 of Scappoose Vernonia Hwy. Thence south to the south boundary of the NE ¼ of the NW ¼ of section 16, T4N R3W. Thence south along the east section line of section 18, 19, 30, and 31 of T4N R3W to the SE corner of section 31, T4N R3W, on the south boundary of Columbia County.

West Boundary: Beginning at the SW corner of the Columbia County boundary, thence north along the west boundary of Columbia County to the NW corner of Section 19, T5N R5W.

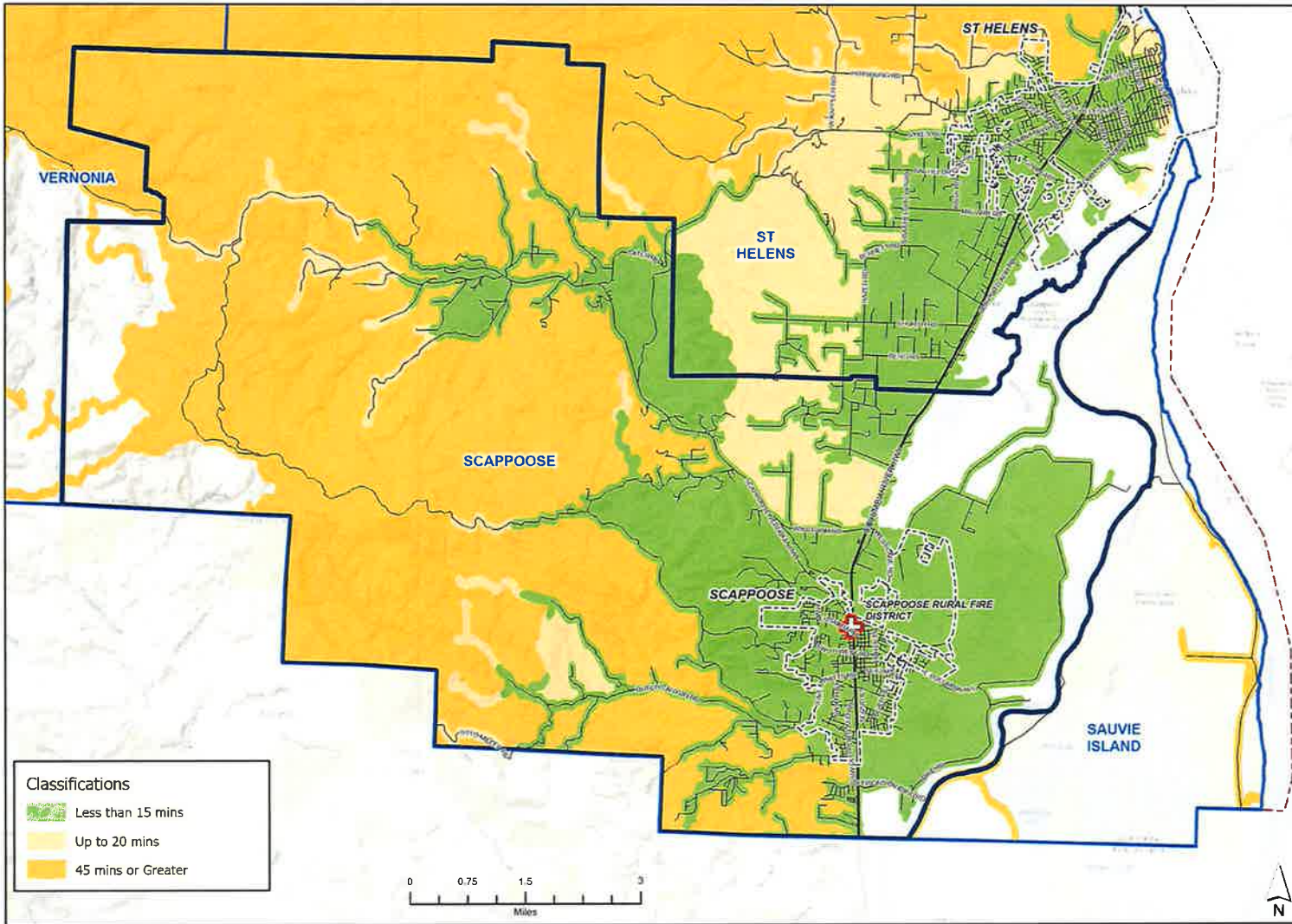


Ambulance Service Area 1 - Sauvie Island - Response Times

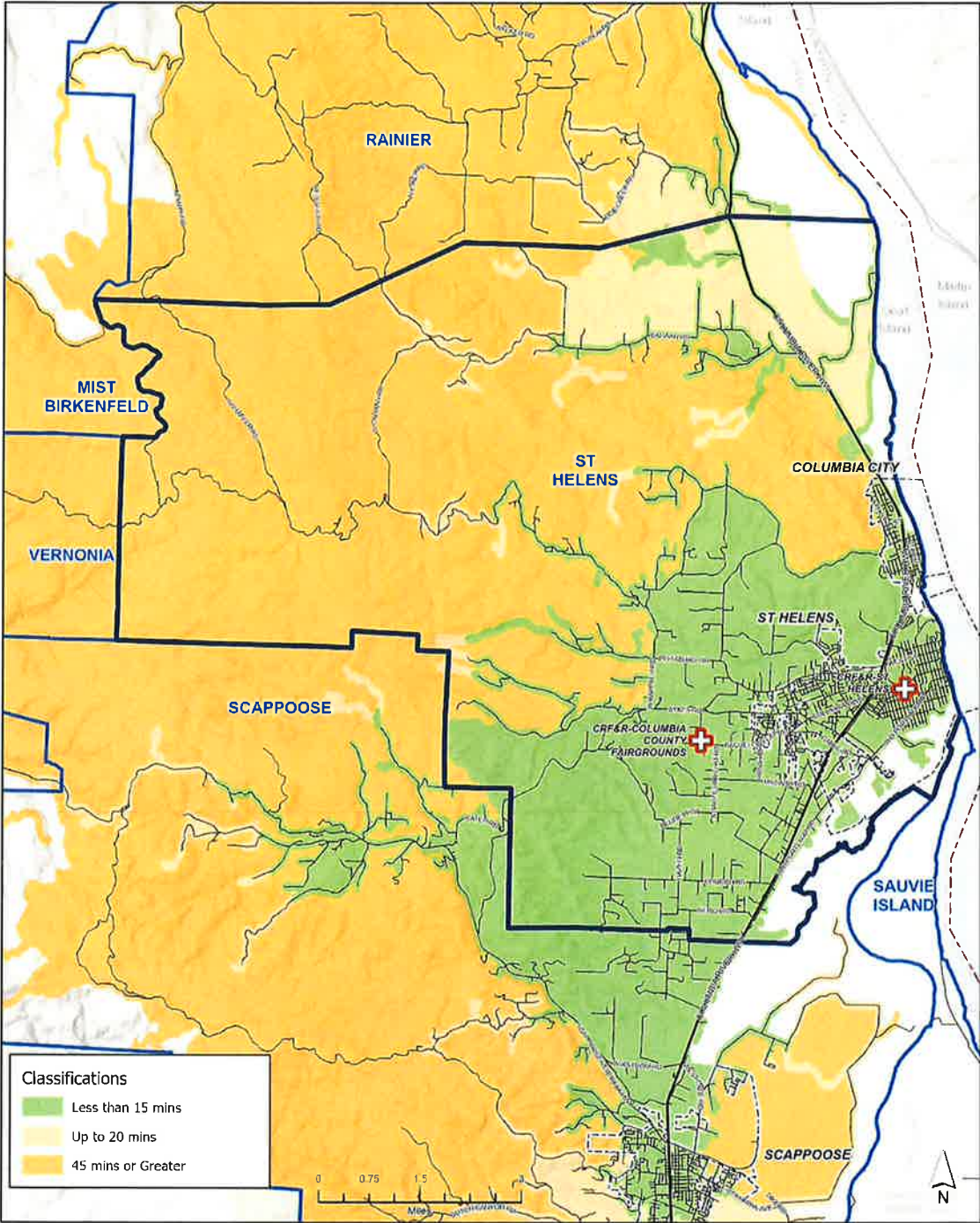




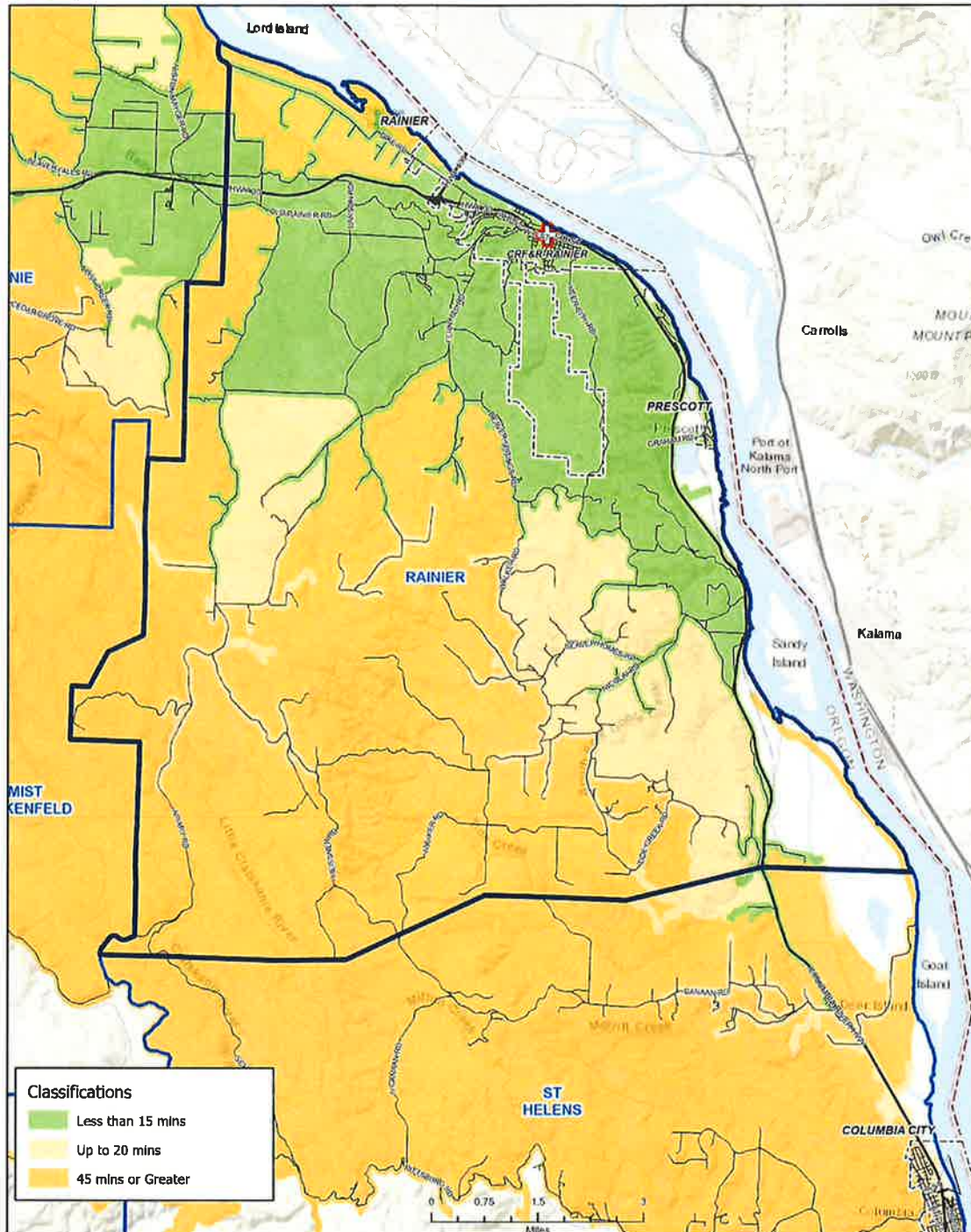
Ambulance Service Area 2 - Scappoose - Response Times



 **Ambulance Service Area 3 - St Helens - Response Times**

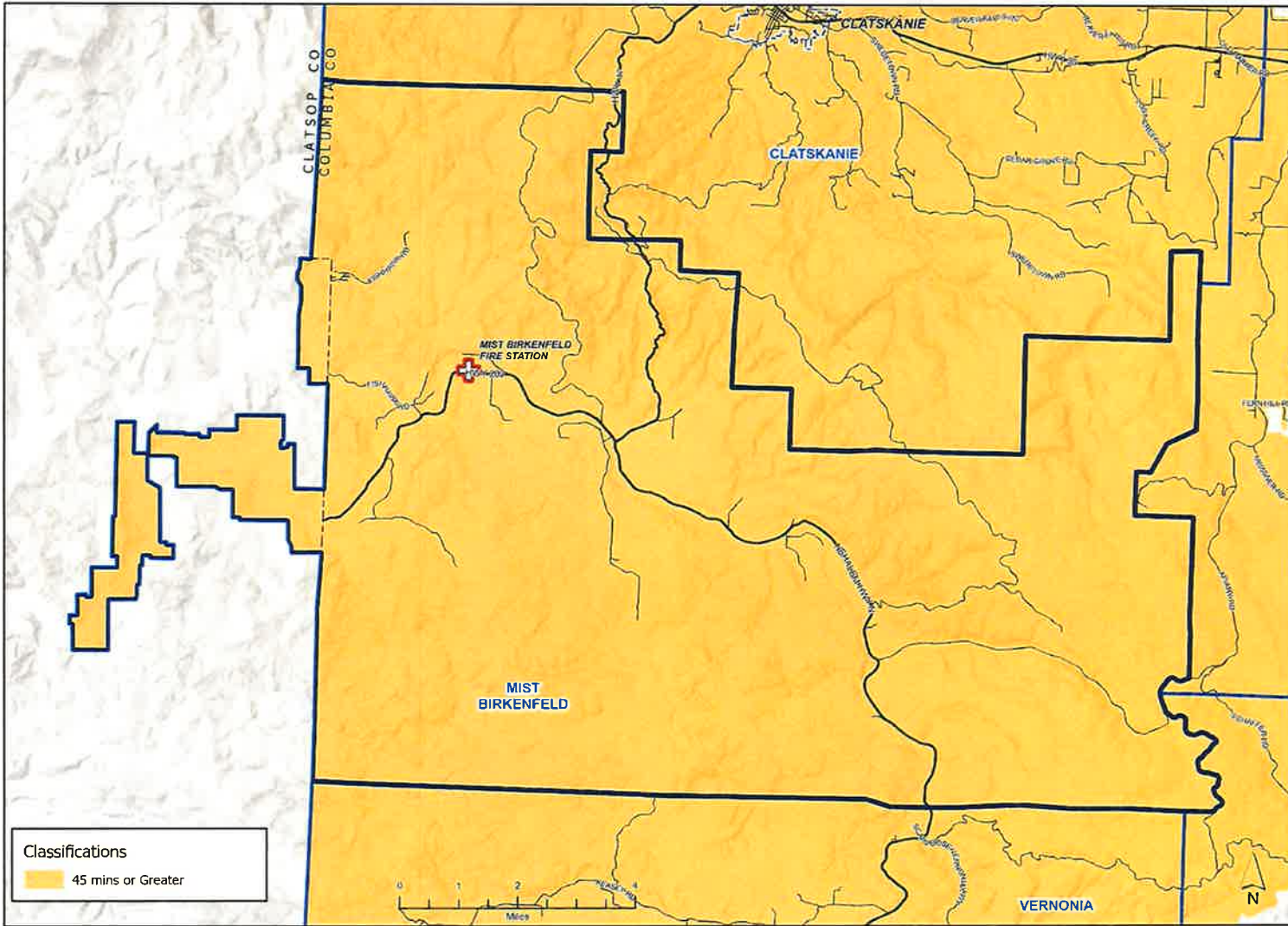


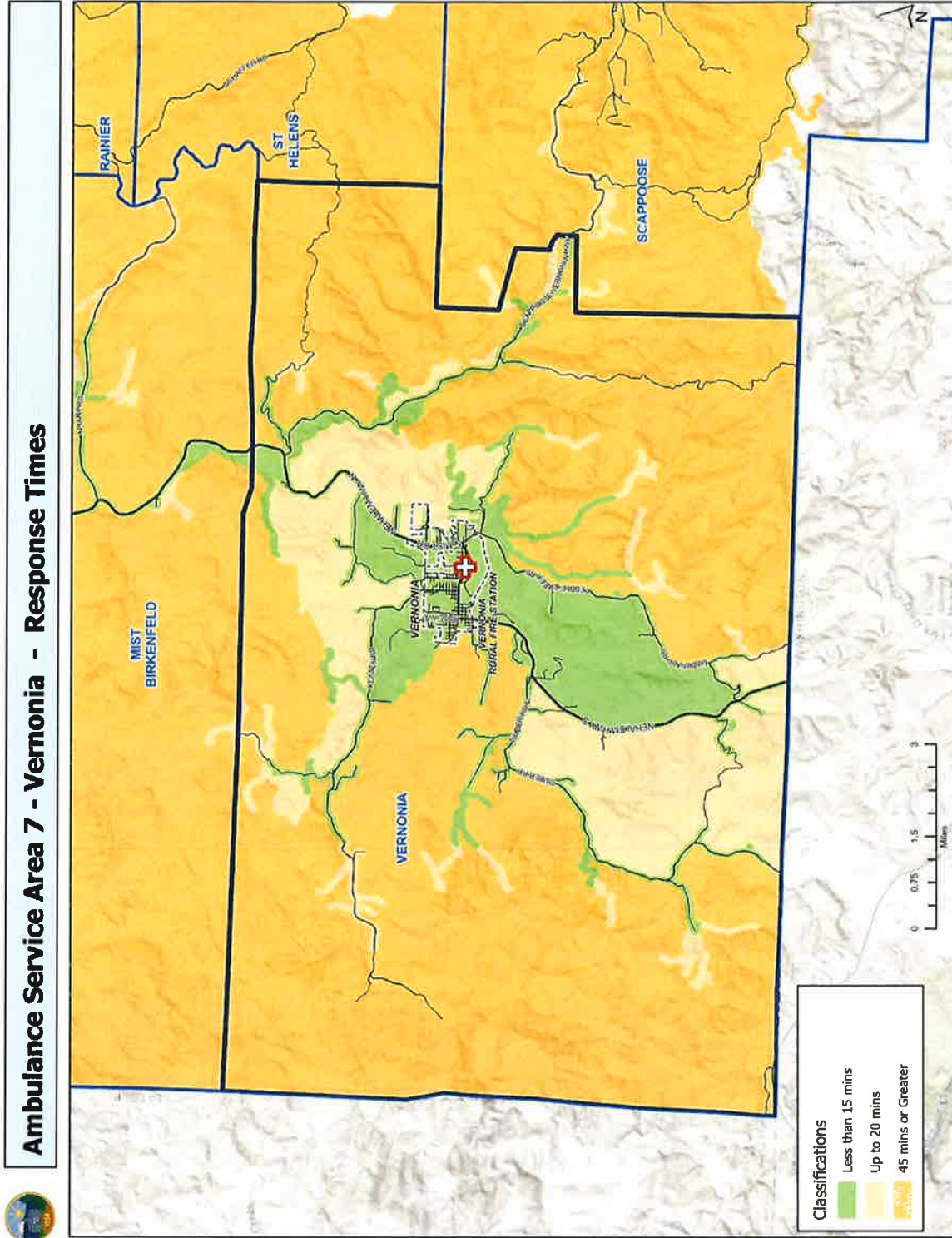
 **Ambulance Service Area 4 - Rainier - Response Times**



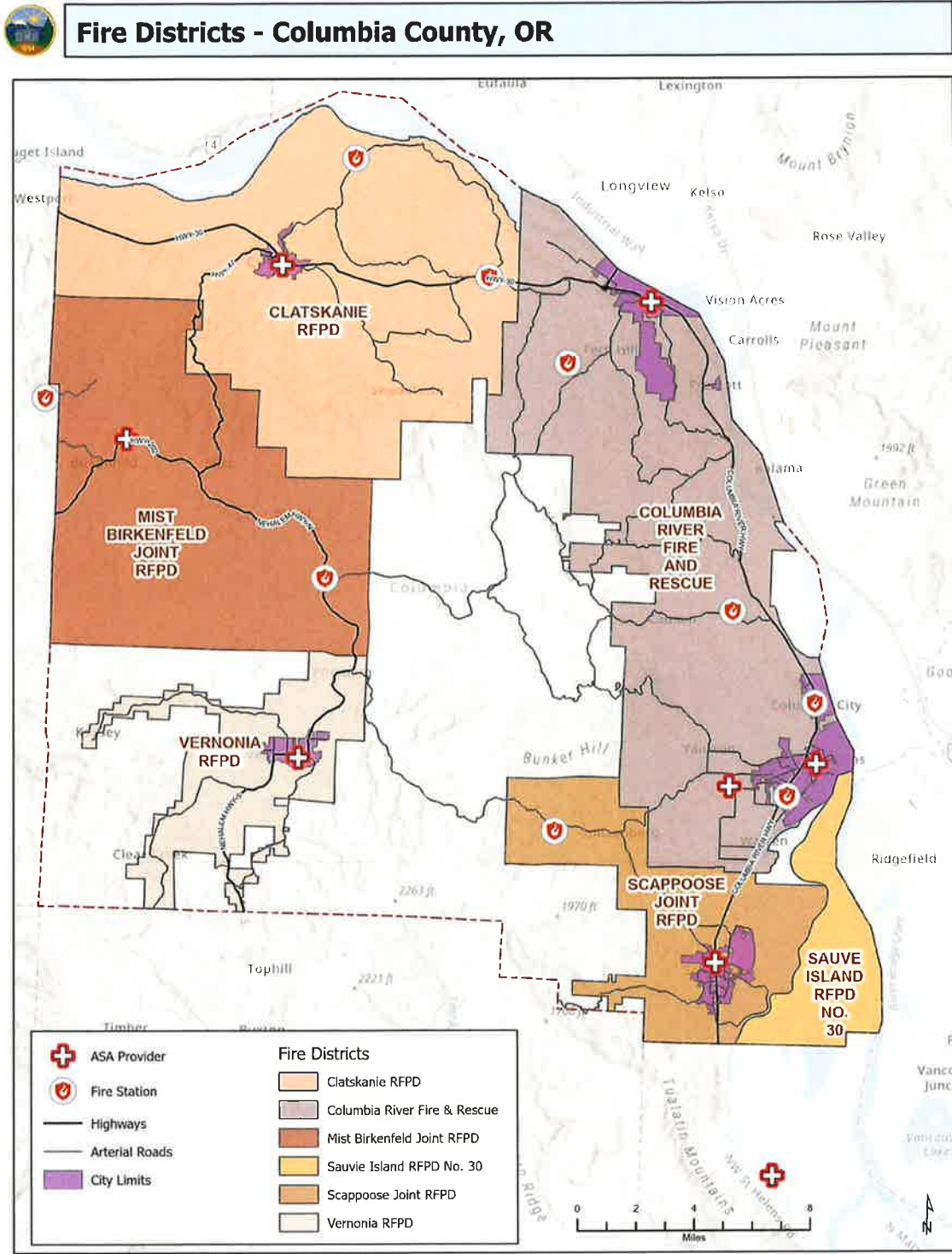


Ambulance Service Area 6 - Mist-Birkenfeld - Response Times





Appendix 4 - Columbia County Fire Districts



Appendix 5 – Columbia County ASA Ordinance

INSERT APPROVED ORDINANCE NO. 2016-1

BEFORE THE BOARD OF COMMISSIONERS
FOR COLUMBIA COUNTY, OREGON

In the Matter of Adopting the Columbia County
Ambulance Service Ordinance and Plan

ORDINANCE NO. 2024-1

The Board of County Commissioners for Columbia County, Oregon, ordains as follows:

SECTION 1. TITLE.

This Ordinance shall be known as Ordinance No. 2024-1.

SECTION 2. AUTHORITY.

This Ordinance is adopted pursuant to ORS 203.035, ORS 682.062, and ORS 682.017.

SECTION 3. POLICY AND PURPOSE.

The Board of County Commissioners finds:

1. That ORS 682.062 and OAR 333-260-0000 to 333-260-0070 require Columbia County to develop and adopt a plan for the County relating to the need for and coordination of ambulance services and to establish Ambulance Service Areas (ASAs) consistent with an adopted Ambulance Service Plan.

2. That this Ordinance adopts the Columbia County Ambulance Service Plan (Plan). The Plan establishes Ambulance Service Areas, expectations for ambulance provider operational system elements, establishing structure and processes for quality assurance, coordination of resources among ASA providers and other resources, mass casualty incident plan development and implementation, emergency communication and systems access expectations, methods for selecting ambulance service providers for each Ambulance Service Area, and establishes an Ambulance Service Area Advisory Committee, consistent with ORS 682.062, 682.017 and 682.031 and implementing regulations.

SECTION 4. HISTORY.

Ordinance No. 90-23 was adopted in 1990, establishing Ambulance Service Areas; assigning Ambulance Service Providers; Creating an Ambulance Service Advisory Committee; providing penalties; and prescribing effective dates. The Ordinance was amended in 2002 by Ordinance No. 2002-3, modifying Section 15 of the Ordinance, and was amended again in 2016 by Ordinance No. 2016-1 to (1) integrate the amendments

made by Ordinance No. 2002-3 into the Columbia County Ambulance Service Ordinance, to update statutory and administrative rule references in the Ordinance which had been renumbered, to correct typographical errors in the Ordinance, to delete ordinance provisions which were no longer relevant to the Ambulance Service Ordinance, to add ordinance provisions to enhance administrative efficiency, and too adopt a format which was similar to other County Ordinances. In addition to Ordinance No. 90-23, the County adopted its Ambulance Service Plan by Order No. 143-91, "In the Matter of the Adoption of the Columbia County Ambulance Service Plan of August 14, 1991" on August 21, 1991. On May 18, 2016, the County adopted amendments to the Ambulance Service Plan Area boundaries by Order No. 16-2016 to address two areas of Clatsop County served by Columbia County fire and ambulance providers.

In 2022, the County hired Fitch and Associates to conduct an operational analysis of ambulance services, identify gaps and potentially duplicative services, provide financial and service models for improvement, and finalize a new ambulance service plan that satisfies the Oregon Health Authority rules and requirements. Fitch and Associates conducted its analysis and presented a report to the County in September 2022 and a draft Plan in March 2023. The County consulted with its EMS leaders and emergency response partners to finalize the draft Plan and submitted it to the Oregon Health Authority for approval on May 25, 2023. The Oregon Health Authority reviewed the Plan and required further development by notice dated September 15, 2023. Thereafter, the County made the required changes and conducted additional outreach to and consultation with its Ambulance Service Committee, EMS leaders, and emergency response partners and resubmitted the updated plan on October 23, 2023. The Oregon Health Authority approved the modified Plan on by notice dated December 12, 2023. The Plan is now ready for adoption.

SECTION 5. ADOPTION or AMENDMENT.

The Columbia County Ambulance Service Plan which is attached hereto as Exhibit A, is hereby adopted.

SECTION 6. SEVERABILITY.

The provisions of this Ordinance are severable. If any provision of this Ordinance is determined to be invalid by a court of competent jurisdiction, such provision shall be considered a separate, distinct and independent provision, and the decision shall not affect the validity of the remaining portions thereof.

///
///
///
///
///
///
///

SECTION 7. SCRIVENER'S ERRORS.

A scrivener's error in any portion of this Ordinance or its attachments may be corrected by order of the Board of County Commissioners.

DATED this 21 day of February, 2024.

BOARD OF COUNTY COMMISSIONERS
FOR COLUMBIA COUNTY, OREGON

By: [Signature]
Casey Garrett, Chair

By: [Signature]
Kellie Jo Smith, Commissioner

By: [Signature]
Margaret Magruder, Commissioner

Approved as to form
By: [Signature]
Office of County Counsel

Attest: [Signature]
Recording Secretary

First Reading: FEB. 7th 2024
Second Reading: FEB. 21, 2024
Effective Date: 05/21/2024